

Center City Mobility Plan



March 29, 2016

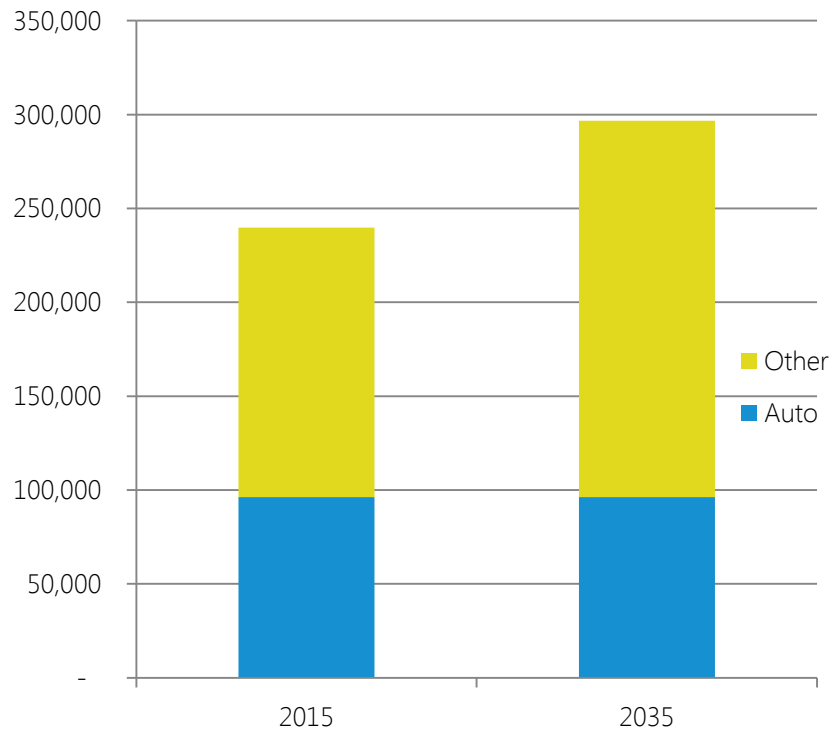
Joint Committee Meeting: King County TREE and City of Seattle Sustainability and Transportation
Scott Kubly, SDOT; Diane Sugimura, OPCD; Victor Obeso, Metro; Mike Harbour, Sound Transit;
Jon Scholes, DSA;

Plan partners

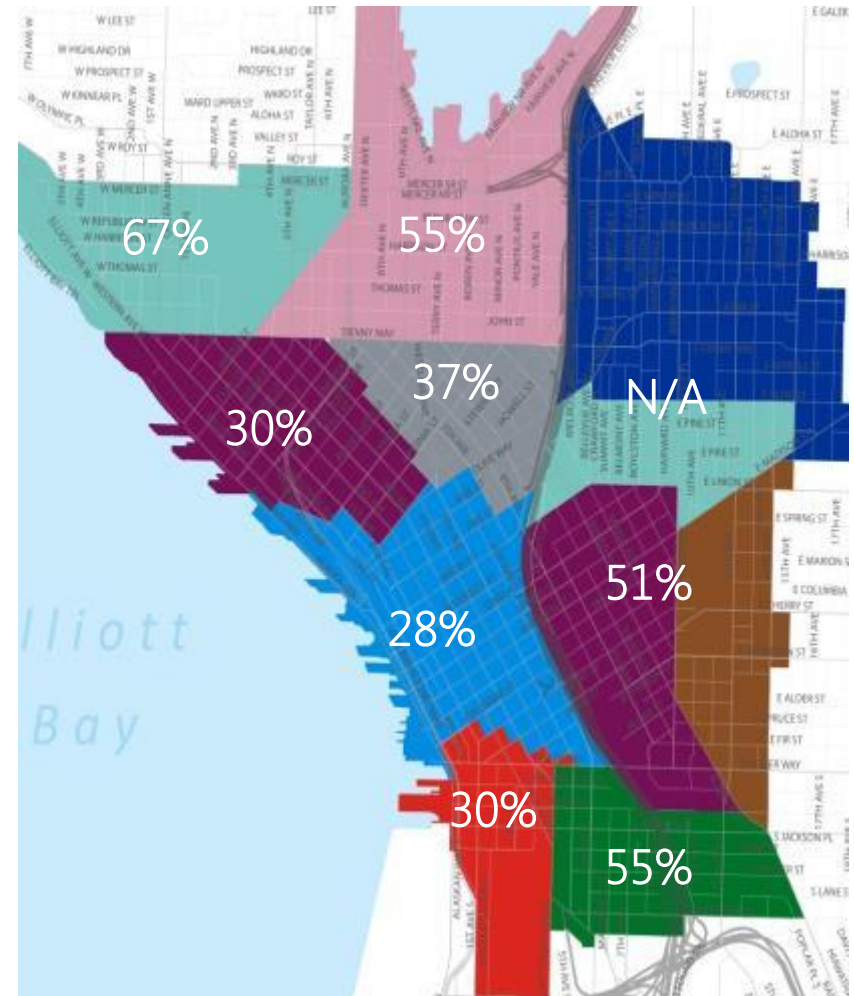


Plan need

Daily commute trips into Center City



Number of trips today and in 2035*



Commute trips by automobile today
(2014 Commute Seattle Mode Split Survey)

*Assumes downtown streets are near capacity, but need to accommodate growth

Plan purpose

Meet the changing needs of a growing Seattle downtown and region by connecting people, places, and products with a reliable regional transportation system and an inviting public realm.



Evolving Center City

- Large-scale developments:
 - Convention Center
 - Major employer headquarters
- Innovation
 - Travel choices and communication
- High-quality public spaces
 - Complement to upcoming investments



Evolving transportation system

- End of joint tunnel operations
- SR 99 tunnel and tolling
- Link Light Rail expansion
- Metro service changes
- Metro Long Range Plan
- New mobility services
- Seattle Transportation Benefit District investments
- Levy to Move Seattle



Outcomes

Integrated plan with:

- Mobility across multiple modes
- Near-term recommendations (due June 2016)
- Performance measures (e.g., mode share targets and travel time)
- Public Realm Plan
- Implementation strategy

**MORE PLACES
IN LESS TIME**

20% → **70%**

People within 1/2 mile of frequent service



Integrating with Metro efforts

End of joint operations planning

- Refine initial concepts
- Recommend additional transit priority treatments
- Joint action plan

Metro's Long Range Plan

- Build consensus around improvements identified in the plan
- Plan for future vision for entire study area



**TRIPLE THE NUMBER OF
TRANSIT BOARDINGS**



Sound Transit 2018-2023

- Support end of joint tunnel operations
- Potential Link shuttle between UW Station and Stadium Station
- Northgate launch 2021
- ST Express reduced footprint in city center



Outreach and engagement

“Everyone’s Downtown” –
broad, diverse audience

- Community engagement plan
- Project Advisory Committee
- Innovative outreach strategies
- Project website



Schedule

Date	Task/Deliverable
June 2016	Recommendations for end of joint bus-rail operations in downtown tunnel
Summer 2016	Advisory committee kickoff
June 2017	Draft plan
December 2017	Final plan

Questions?

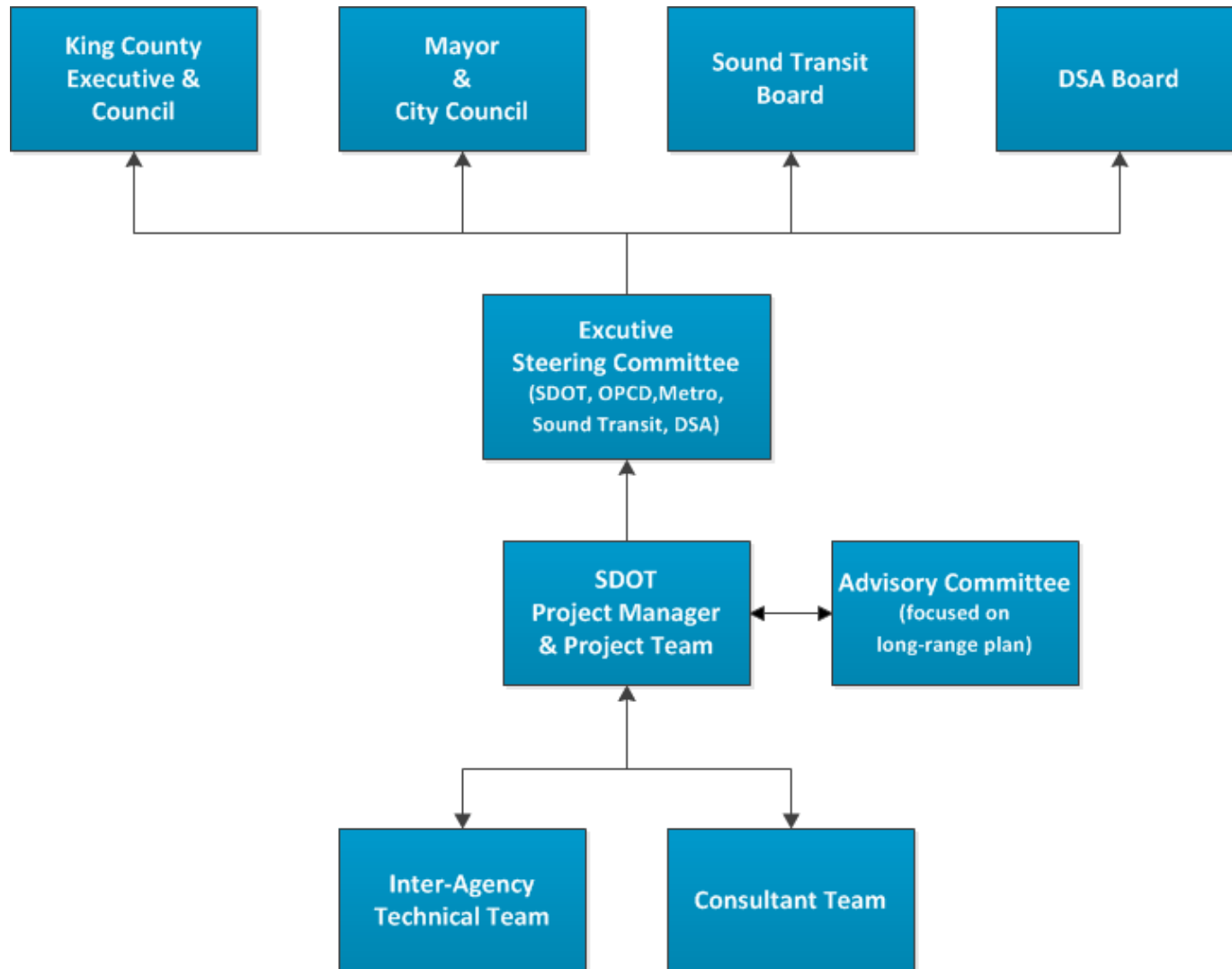
Project Manager

Eric.Tweit@seattle.gov | (206) 684-8834

www.seattle.gov/transportation



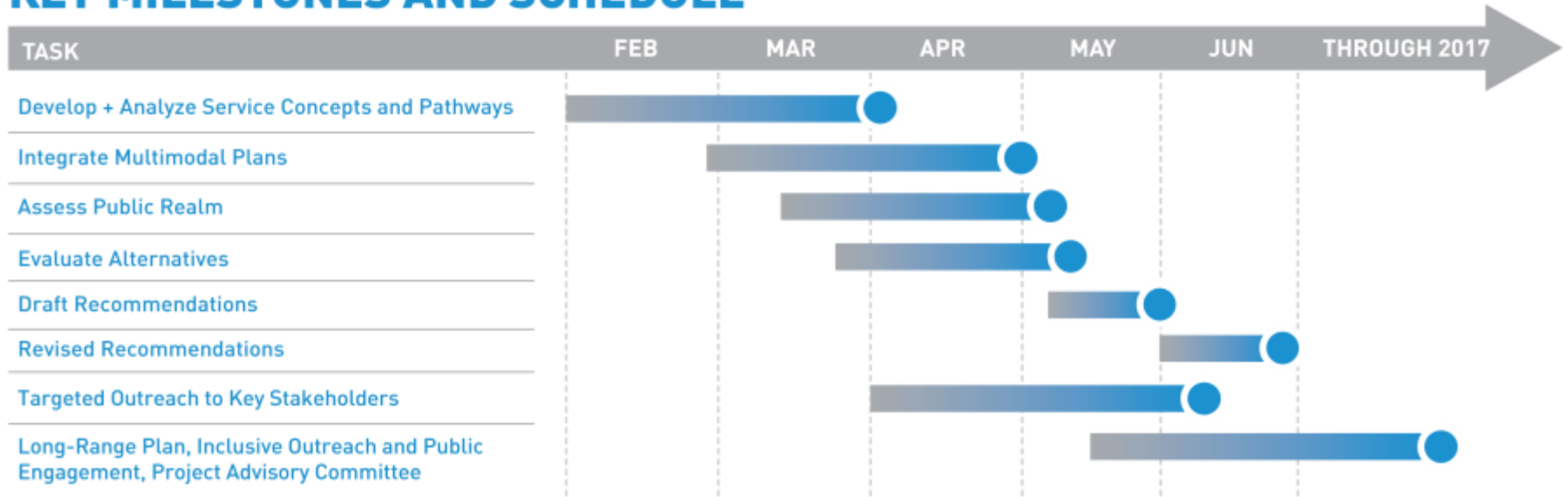
Project organization



Phase I: Scope and schedule

Focus on end of joint bus-rail operations in transit tunnel

KEY MILESTONES AND SCHEDULE



Phase II: Scope and schedule

DRAFT KEY MILESTONES AND SCHEDULE

