

# METRO CONNECTS

## DEVELOPMENT PROGRAM

### **Transit Speed & Reliability Program**

Jana Demas, Strategic Planning Supervisor

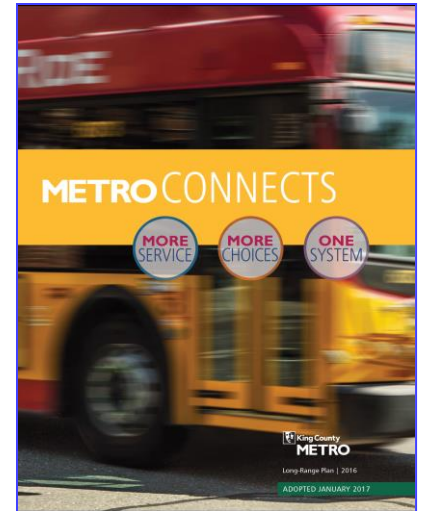
Irin Limargo, Speed and Reliability Supervisor

Regional Transit Committee

July 19, 2017

# METRO CONNECTS Vision

- 70% more service
- 3 to 4 times more capital investment to support service and make it faster and more reliable
- Increased partnerships
- More people riding transit



# How We Get There

Development Program (MCDP) is moving Metro and our cities toward the METRO CONNECTS vision

1. Identify partnership opportunities
2. Understand Metro's constraints to deliver
3. Develop communications tools

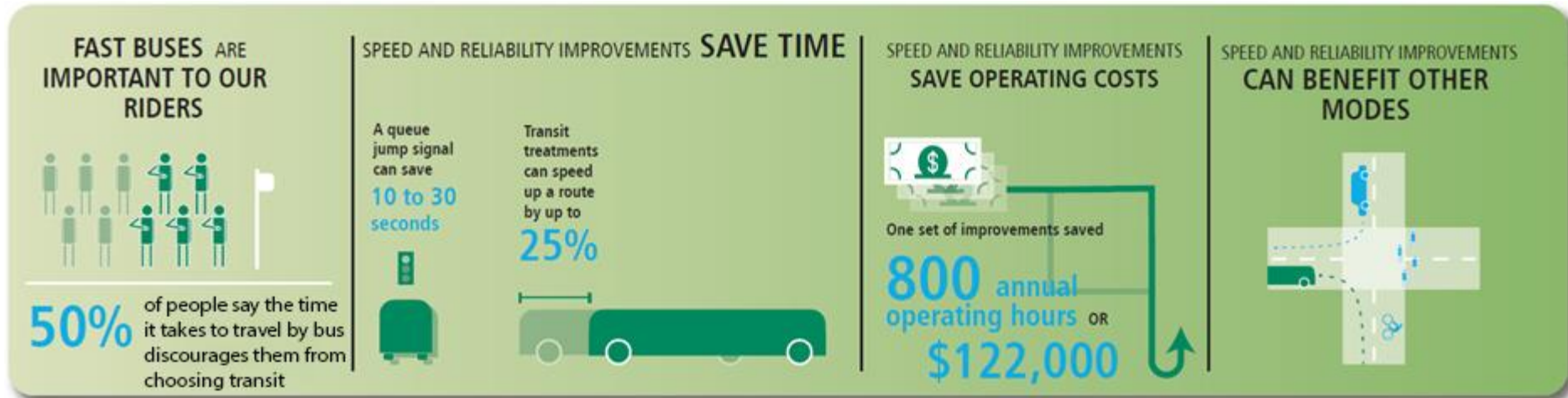
# For Discussion Today: Speed and Reliability

- Describe Speed & Reliability improvements
- Establish understanding of how Speed & Reliability partnerships work
- Discuss how we can expand Speed & Reliability partnerships through MCDP



# Speed & Reliability Overview

## Benefits of Speed & Reliability Improvements



Sources: King County Metro 2009 Rider/Non-Rider Survey; King County Metro Annual Spot Improvements Report; King County Metro E Line Report

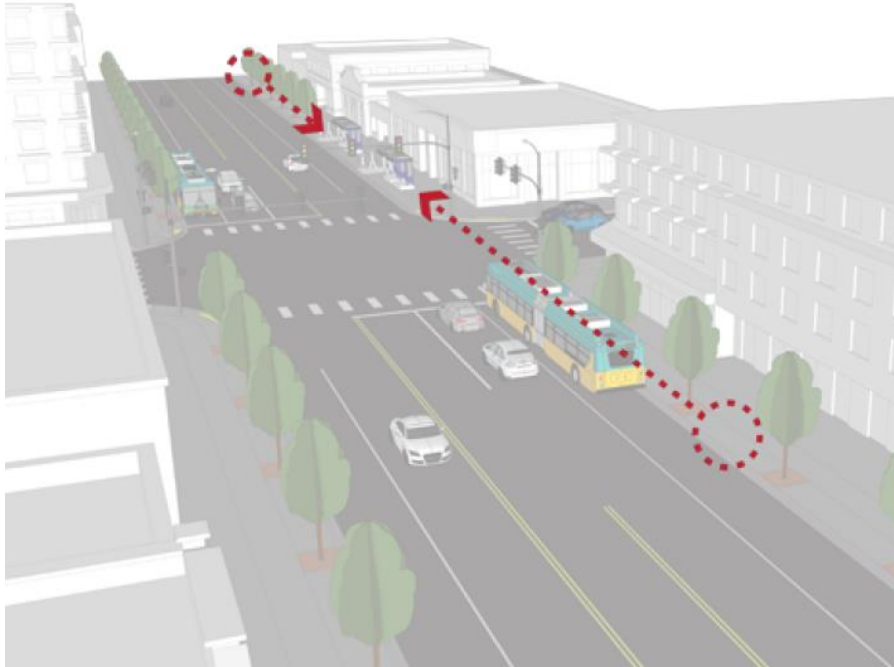
# Speed & Reliability Toolbox Categories

- Bus Operations
- Traffic Control
- Infrastructure
- Transit Lanes

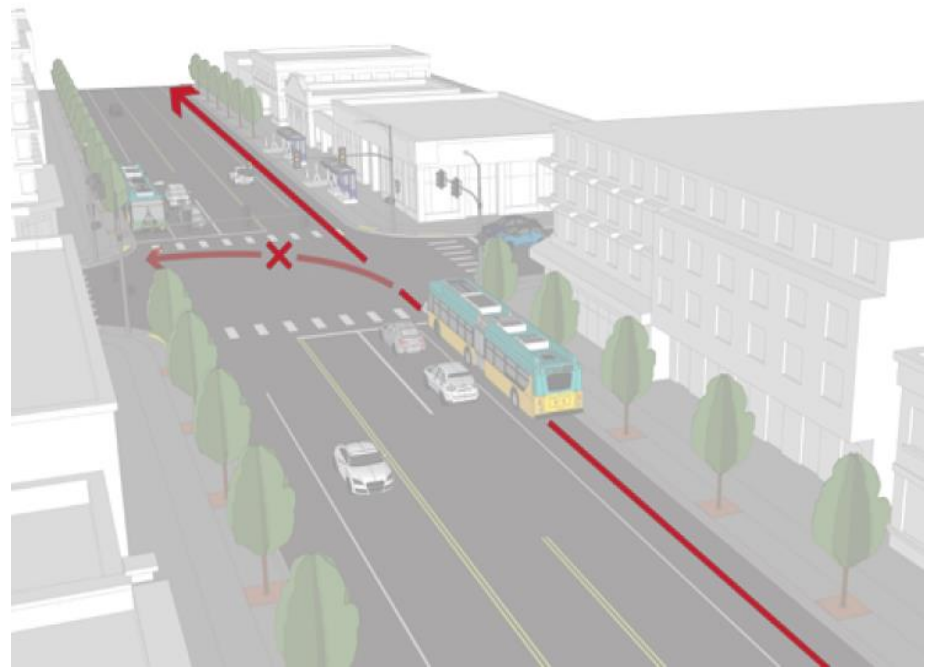


# Example: Bus Operations Tools

## Stop Consolidation



## Route Design





# Example: Traffic Control Tools

## Signal Phase Modification



## Queue Jump





# Example: Infrastructure Tools

## Bus Zone Curb Extension



Seattle

## Turn Radius



White Center

# Example: Transit Lane Tools

## Curbside Bus Lane



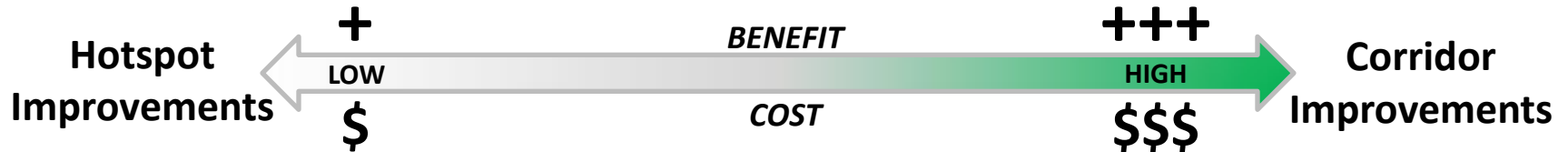
Shoreline

## Contraflow Bus Lane



Seattle

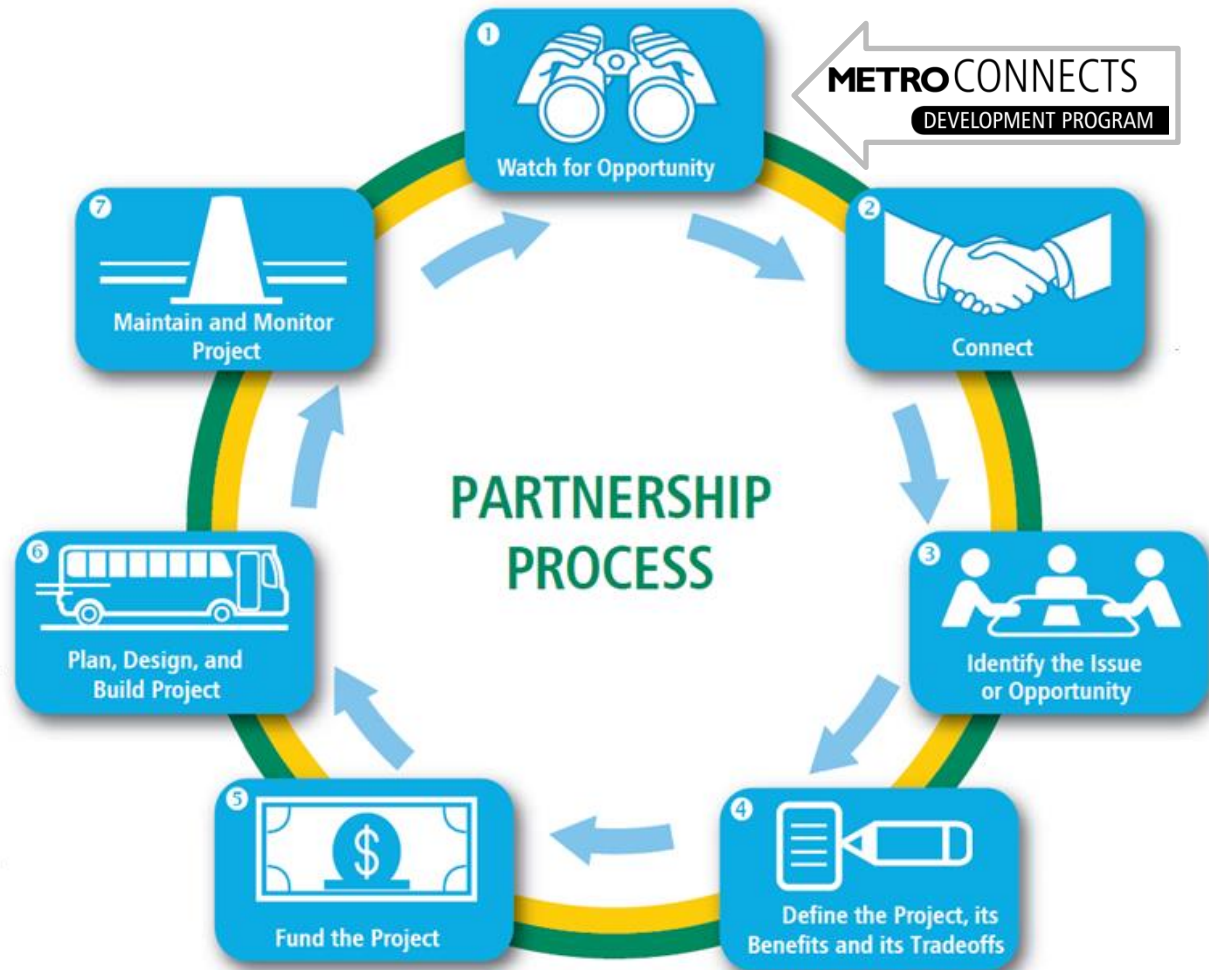
# How Speed & Reliability Relates to MCDP



## 2016 Metro Speed & Reliability Program:

- Speed & Reliability includes hotspot and corridor improvements
- 27 hotspot locations across King County
- 4 corridor projects in design phase, construction in 2018
- 90+% of partnerships in METRO CONNECTS are Speed & Reliability

# Partnership Process



***Questions?***