

King County Council Committee of the Whole July 19, 2017



Eastside Rail Corridor Trail: *From Master Plan to Implementation*



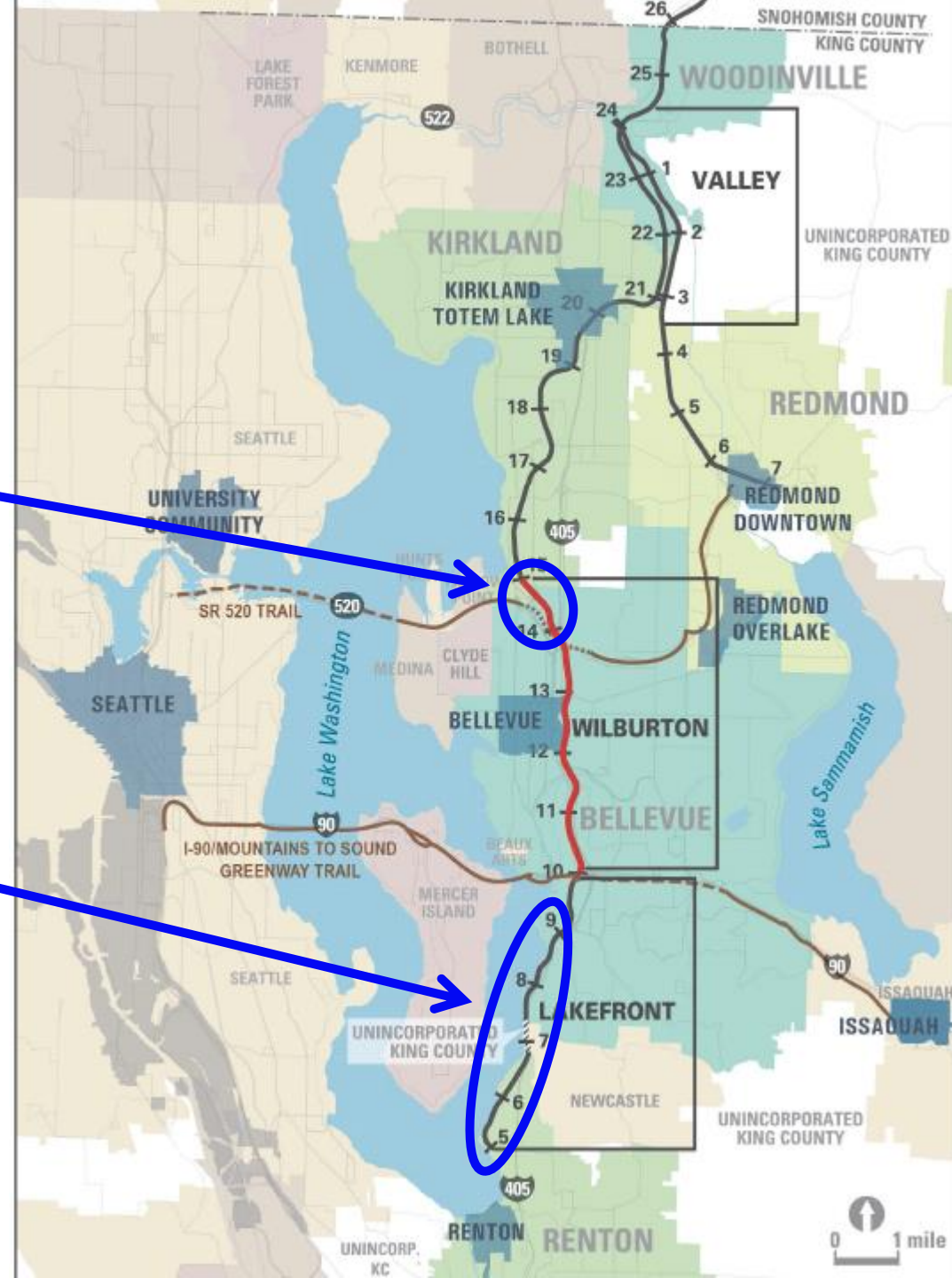
Presentation Overview

- Rail Removal and Interim Trail Update
- Wilburton Segment Design
- NE 8th Street Crossing Design
- Wilburton Gap Bridge and Wilburton Trestle
- Sound Transit Facility/Trail Coordination Updates
 - Operations and Maintenance Facility East (OMF-E)
 - Downtown Redmond Link Extension
- ERC Branding Effort Strategy

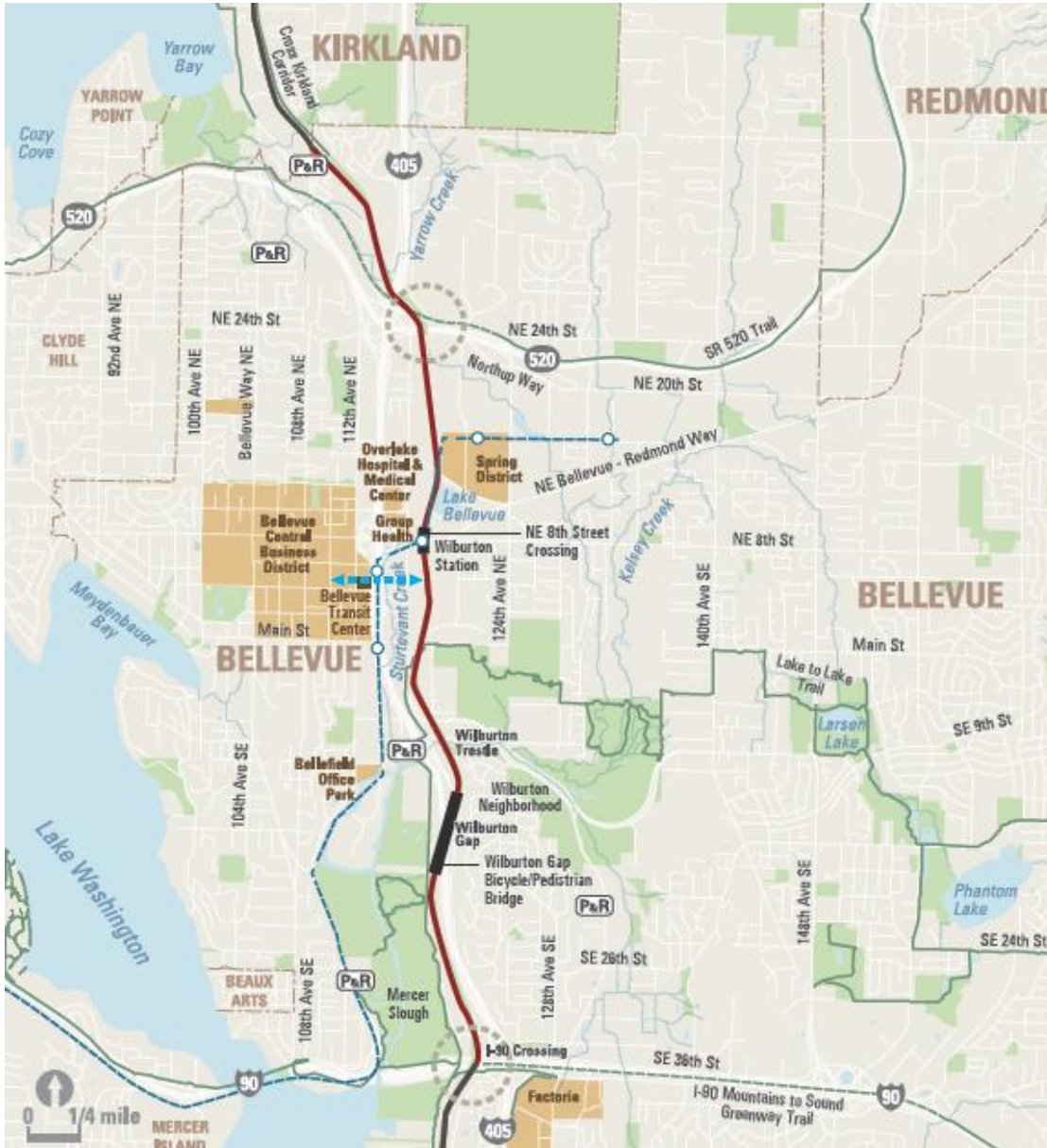


Interim Trail Sections Opening by Late 2017

- From Cross Kirkland Corridor at 108th Ave. NE to Northup Way (SR 520 Trail connection)
 - One mile section
 - Extends from CKC into Bellevue and connects to 520 Trail
- From Gene Coulon Park to Newcastle Beach Park
 - Four mile section
 - Connects at either end to existing Lake Washington Loop Trail
- Other Trail Sections to Open as Funding Becomes Available



Wilburton Segment Design: 2017-2019



- Prioritized to coordinate design with numerous partner agency projects and opportunities
- Most urban and dynamic portion of the trail including:
 - Historic Wilburton Trestle
 - Connections to SR 520 and I-90 Trails
 - Major crossings and bridges over I-90, I-405, NE 8th Street and others
 - At the heart of the redeveloping Wilburton area
 - Connections to East Link Light Rail Stations, Spring District
- Public and stakeholder engagement will begin this year



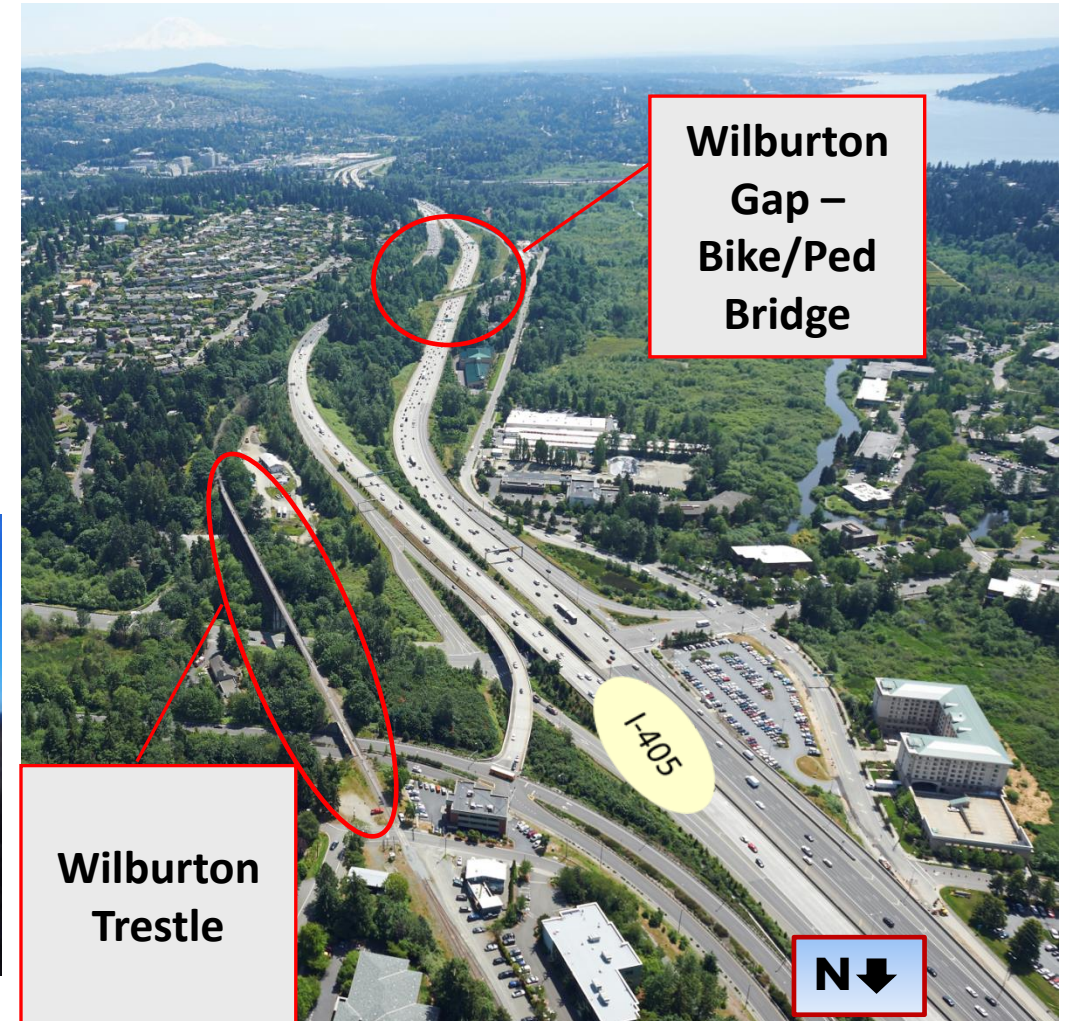
NE 8th Street Crossing Design: 2017-2019



- Grade-separated trail crossing of NE 8th Street in Bellevue
- Overall Goal: Achieve best possible integration of trail with Wilburton Station and surrounding land uses
- 30% Design Complete, Beginning Final Design in 2017
- Art integration into bridge design: artist selected by 4Culture
- Possible construction timing 2020-2022 (pending funding)
- Public and stakeholder engagement to begin this year

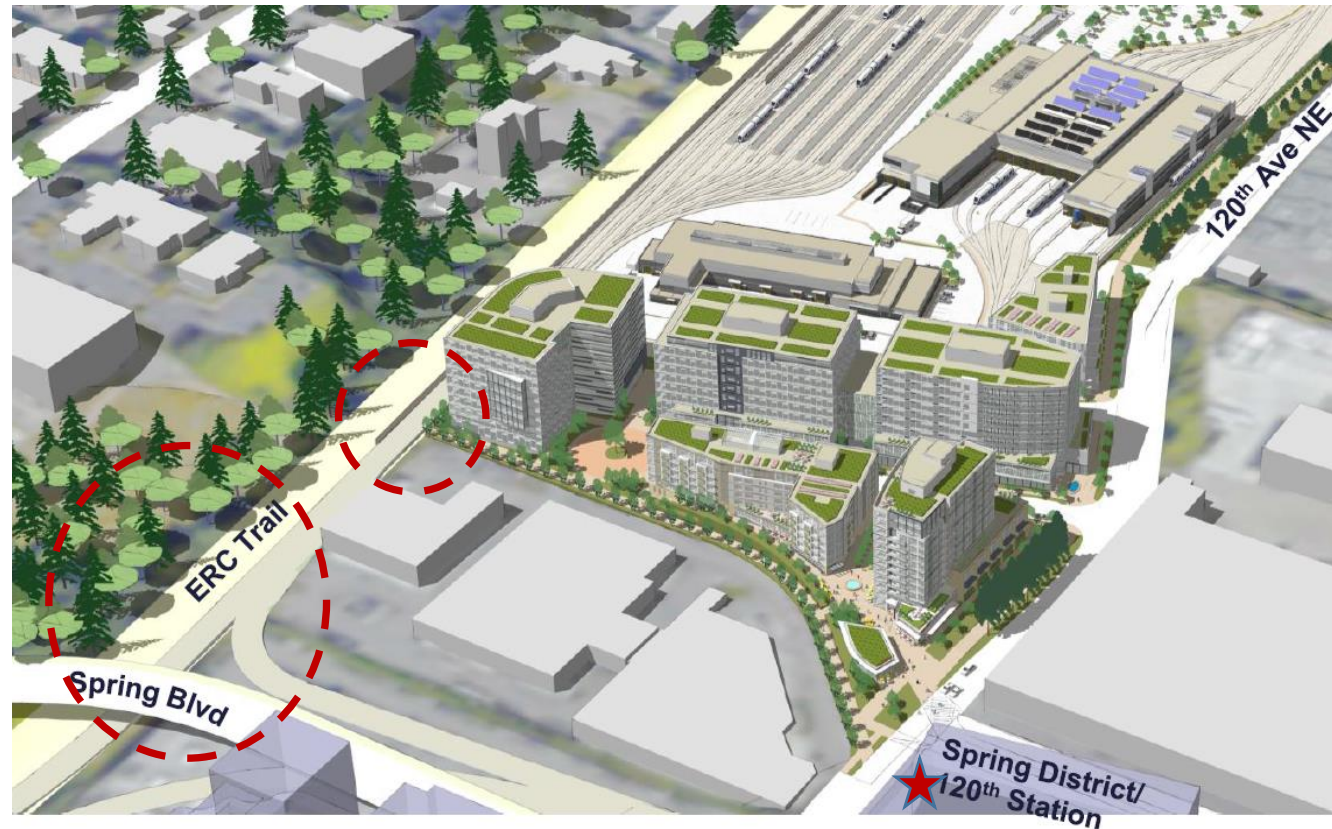
Filling the Gaps by 2020: I-405 Crossing (“Wilburton Gap”) and Wilburton Trestle

- WSDOT to build bicycle/pedestrian bridge across southbound lanes of I-405 by 2020
- King County to complete rehabilitation and retrofit of Wilburton Trestle for the ERC Trail by 2020 (pending funding)
- Agencies will coordinate closely during design and construction



Coordination with Sound Transit on OMF-E Facility

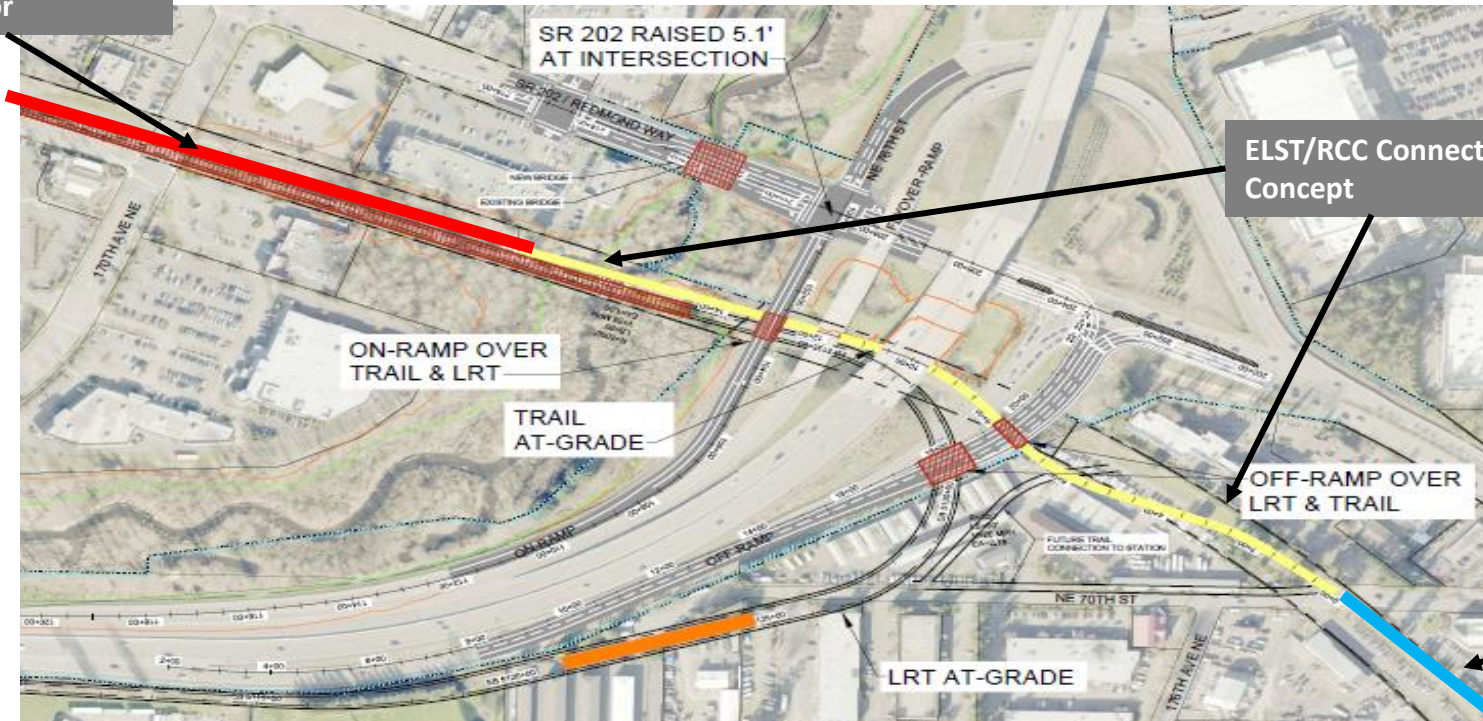
- Sound Transit has selected OMF-E Design Build Contractor
- TOD Master Development Plan by December 2017
- Trail Connection Opportunities to Spring District and light rail station
- Charrette this fall on trail connections (Sound Transit, City of Bellevue, King County, DB Team and Stakeholders) (date TBD)



Coordinating Trail Connections with Sound Transit's Downtown Redmond Link Extension

- ST3 funded extension of East Link to Redmond, with alignment crossing SR520 in former rail corridor owned by KC
- Presents unprecedented opportunity to connect Redmond's completed portion of the ERC trail on the spur ("Redmond Central Connector") with the County's East Lake Sammamish Trail
- Provides a safe, grade-separated, off-street, cost-effective regional trail connection (target completion 2020-2023)
- King County, Redmond and Sound Transit coordinating closely in planning and design phase 2017-2018

Redmond Central Connector



ELST/RCC Connector Segment Preliminary Design Concept

East Lake Sammamish Trail

Rebranding the Eastside Rail Corridor

- Regional Advisory Council (RAC) agreed on collaborative regional process for rebranding the ERC, including:
 - Coordination by Eastside Greenway Alliance and oversight by RAC
 - Participation of all owners, easement holders and stakeholders
 - Public Process
 - Final branding products (name, logo, tagline, usage guidelines) by mid-2018
- Brand would communicate and foster:
 - The multi-use vision of the corridor, including trail, transit, and utilities
 - The regional significance of the corridor as a destination supporting economic development
 - The transportation, recreation, tourism, public health, and environmental benefits of the corridor
 - Nesting of local trail identities (Kirkland, Redmond) within the new regional ERC identity; and nesting of new ERC trail within the King County Regional Trail system



Questions?

Erica Jacobs

Project Manager

erica.jacobs@kingcounty.gov

(206) 477-5539

[www.kingcounty.gov/parks/
eastsiderailcorridor](http://www.kingcounty.gov/parks/eastsiderailcorridor)



PARKS

Your Big Backyard