

STATUS BRIEFING ON SHIP CANAL WATER QUALITY PROJECT

**REGIONAL WATER QUALITY COMMITTEE
SEPTEMBER 7, 2016**

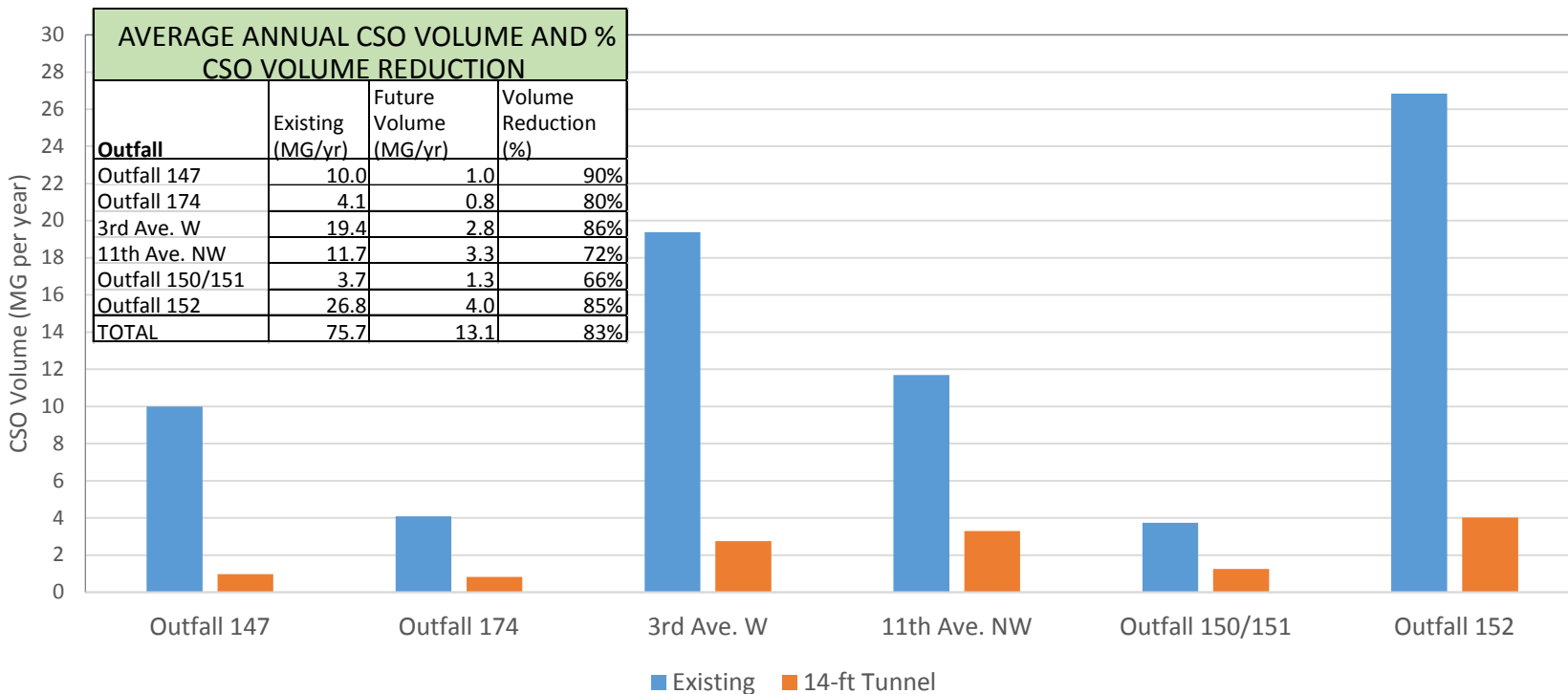
**PRESENTED BY ED MIRABELLA
SPU PROJECT EXECUTIVE**

PROJECT BENEFITS

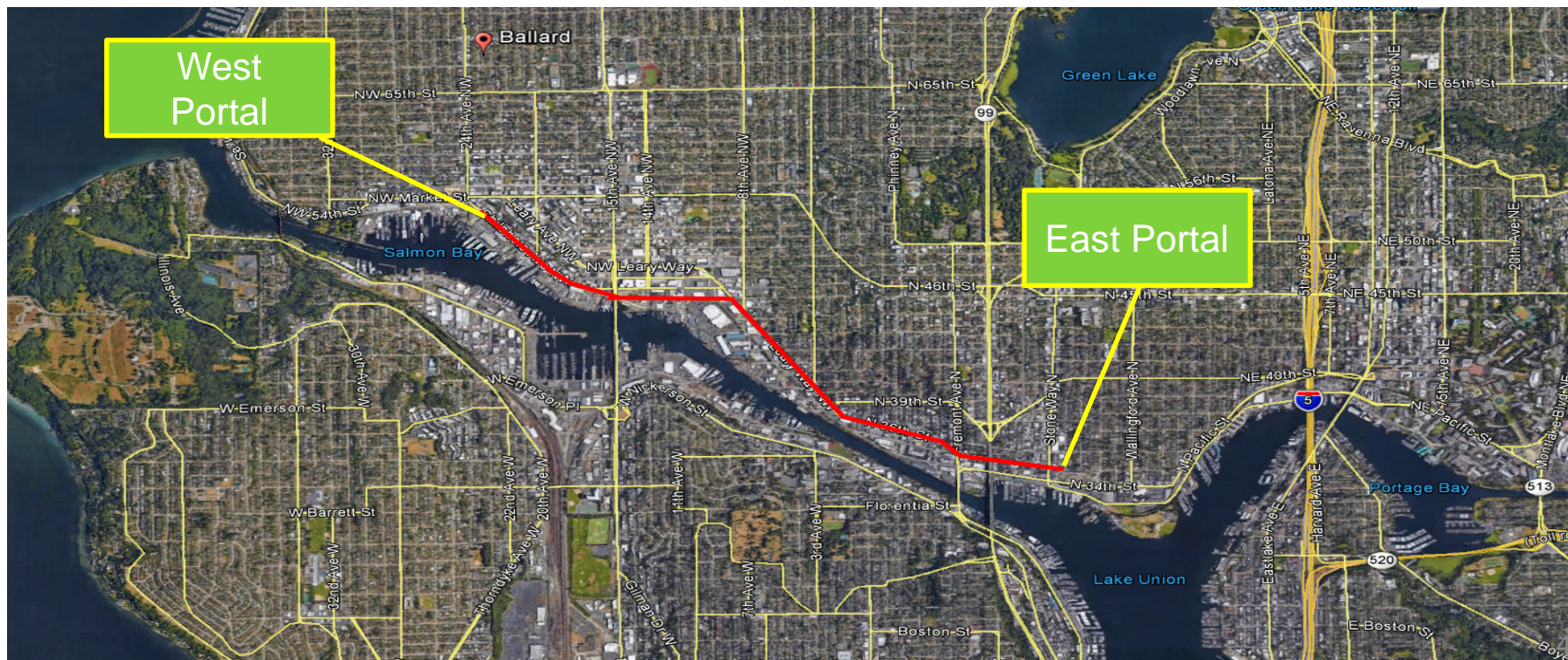
- Improve water quality by controlling Combined Sewer Overflows (CSOs) at:
 - 11th Ave. NW (KC)
 - 3rd Ave. W (KC)
 - Ballard Outfalls 150, 151 & 152 (Seattle)
 - Fremont Outfall 174 (Seattle)
 - Wallingford Outfall 147 (Seattle)
- Reduce untreated overflows to the Ship Canal by over 50 MG/year
- Fulfills requirements of both Seattle and King County Consent Decrees

CSO REDUCTION

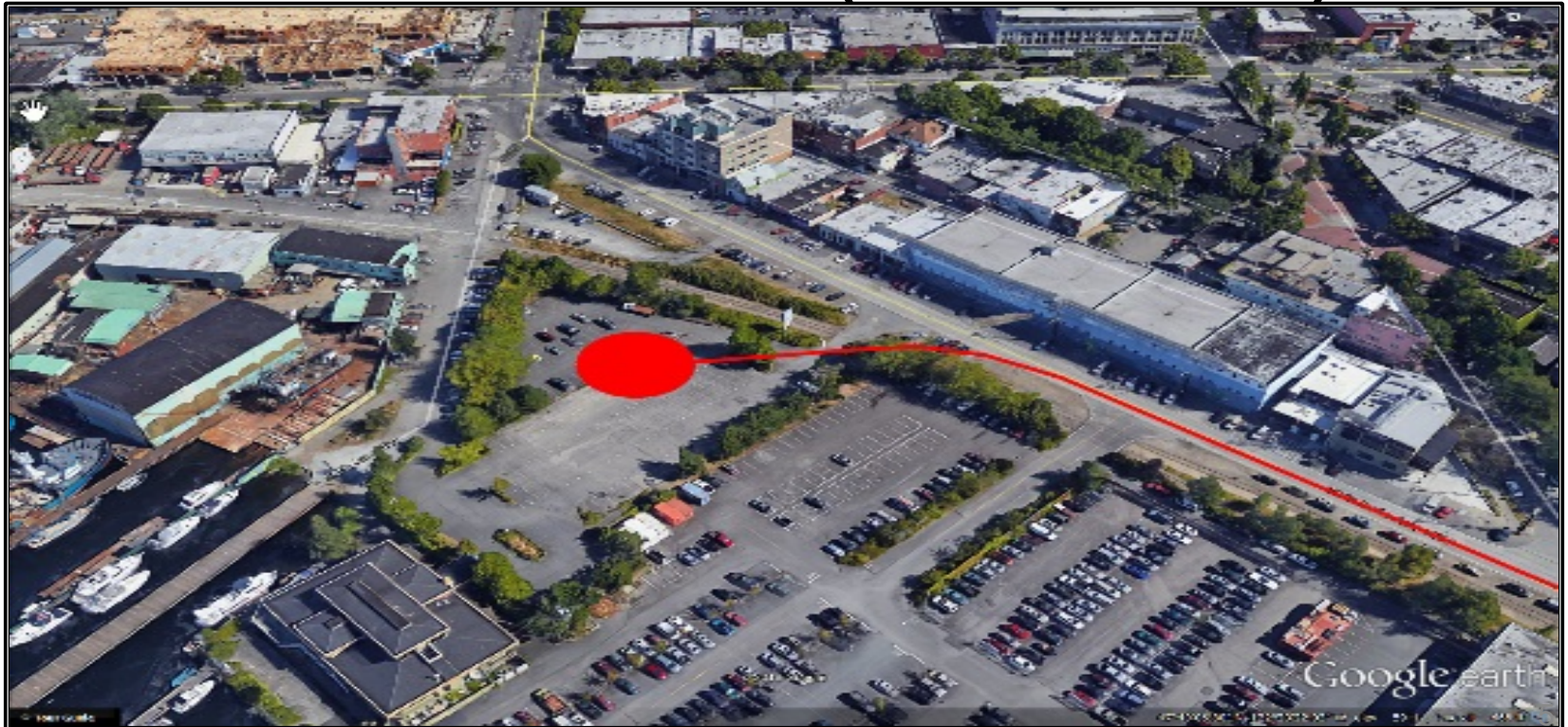
SCWQP Annual CSO Volume – Before and After Project



PROJECT LOCATION



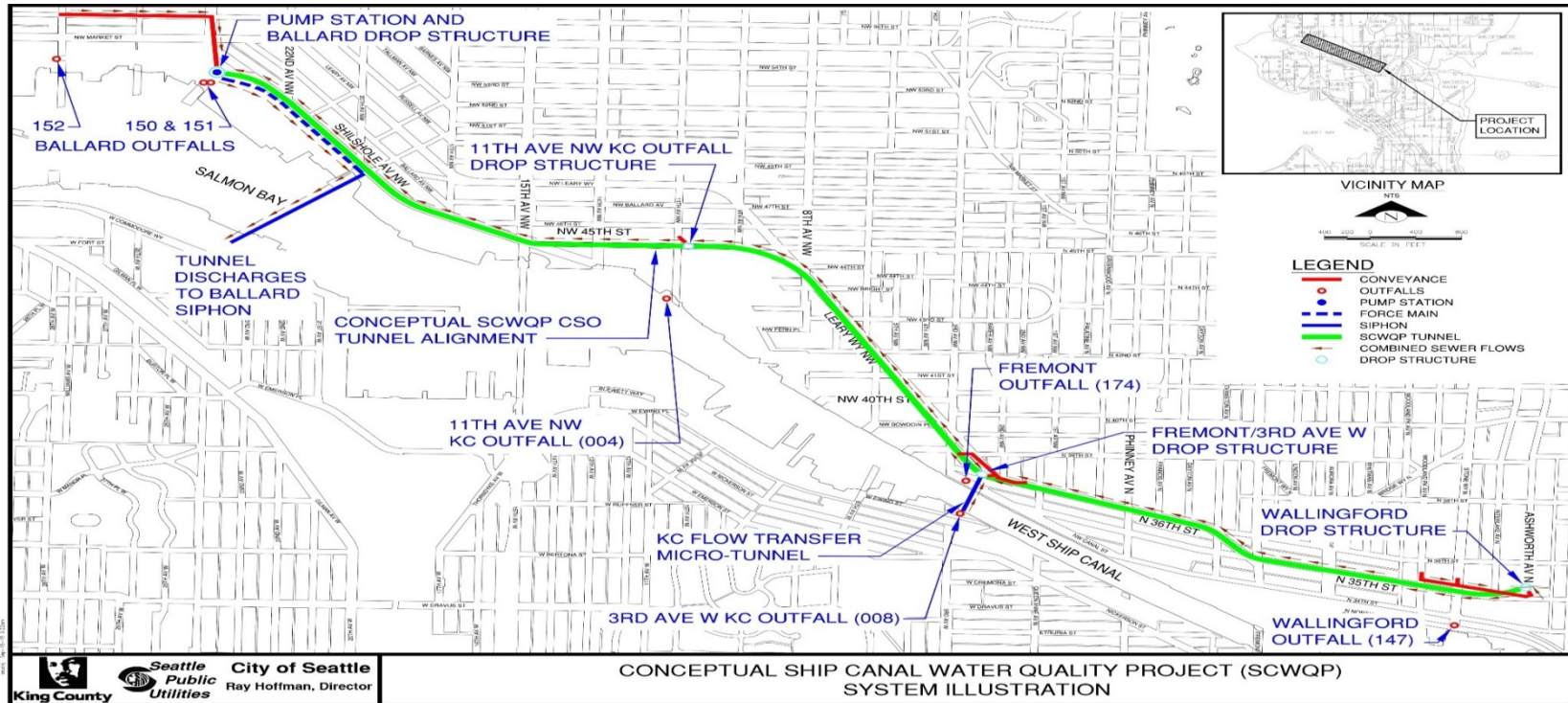
PROJECT LOCATION (WEST PORTAL)



PROJECT LOCATION (EAST PORTAL)



PROJECT LOCATION



Project Description

The Joint Ship Canal Water Quality Project includes:

- A minimum 15.24-MG offline storage tunnel approximately 2.7 miles long
- Pump station to drain the tunnel to West Point Treatment Plant
- Odor control
- Pipelines to convey CSO flow to the tunnel
- Control systems

Cost Estimate at Completion:

- \$423.4 million - Total Cost
- \$133.7 million - King County share

30% West Portal Site Plan



Project Status

Joint Project Agreement

- Parties executed agreement July 27, 2016

Design

- 30% design complete; proceeding with 60% design

Permitting/Environmental

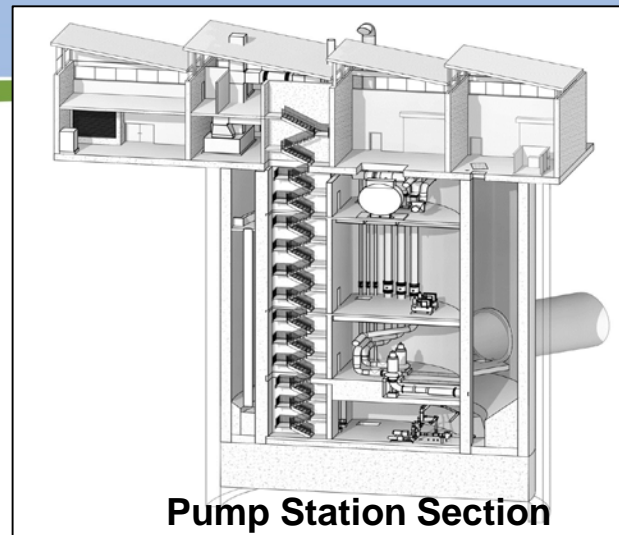
- Draft Facility Plan submitted
- Supplementary Environmental Impact Statement Public Hearing - Oct.
- Major properties obtained

Community

- Over 20 briefings with community groups and businesses

Sustainability

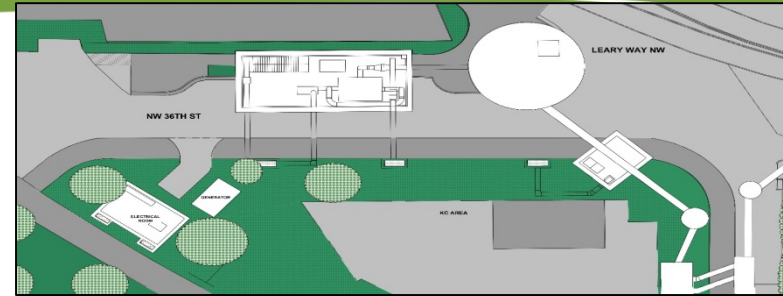
- Project designed to achieve LEED standards per City of Seattle policy



Project Status

Value Engineering

- Independent third-party value engineering
 - experts in VE process
 - included both SPU and KC staff
- Identified 37 items for potential value added
 - 19 for tunnel
 - 18 for pump station
 - review of items for validation and acceptance into the project continues
 - majority of items expected to be incorporated into the project



Fremont Plan View

Project Schedule

Alternatives
Analysis

Pre Design / Final
Design

Construction

Operations

2014 2015 2016 2017 2018 2019 2020 2021 2022 2023 2024 2025 2026

Deliverable	CD Milestone
Draft Engineering Report	Mar. 2017
Submit Final Engineering Report for approval	Dec. 2017
Draft Plans and Specifications	Mar. 2020
Submit Final Plans and Specs. for approval	Dec. 2020
Construction Start (Notice to proceed)	Jul. 2021
Construction Complete	Dec. 2025
Achieve Controlled Status	Dec. 2026

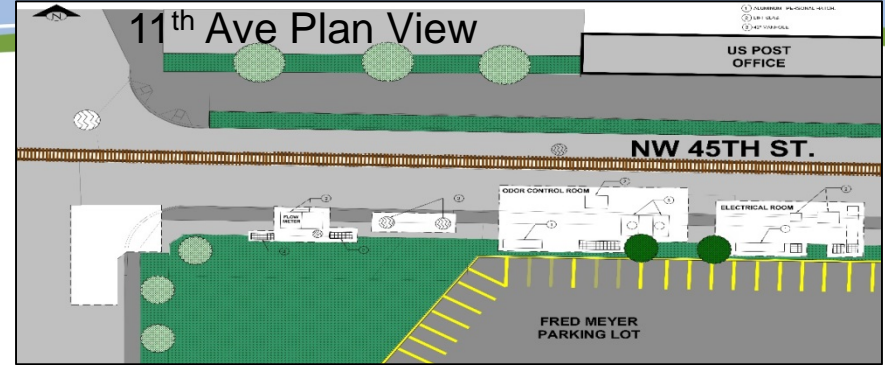
Joint Agency Oversight:

- Joint Oversight Committee
 - Provides executive level policy guidance
 - Initial meeting held and charter approved
- Project Review and Change Management Committee
 - Provides senior level management oversight, support, and approval of major project changes
 - Several meetings held for approval of charter, and approval of \$3.46 M to cover Salmon Bay property cost from contingency

Race and Social Justice

- All consultants and contractors to meet the City's inclusion plan policy
- Seattle Municipal Code (SMC) and the Mayor's Executive Order provide for women and minority firms in City contracting
- Seattle's Community Work Force Agreement has been signed

2016 Look Ahead



- Modification of King County Consent Decree (in progress) to reflect the joint project
- Issue draft Supplemental Environmental Impact Statement (SEIS) for public comment and hold public hearing
- Complete 60% Design incorporating Value Engineering recommendations
- Report to King County Council in January 2017 for period ending December 31, 2016 to include updated project costs

QUESTIONS

Ed Mirabella, Ship Canal Water Quality Executive, Seattle Public Utilities

J.Edward.Mirabella@seattle.gov

(206) 684-5959