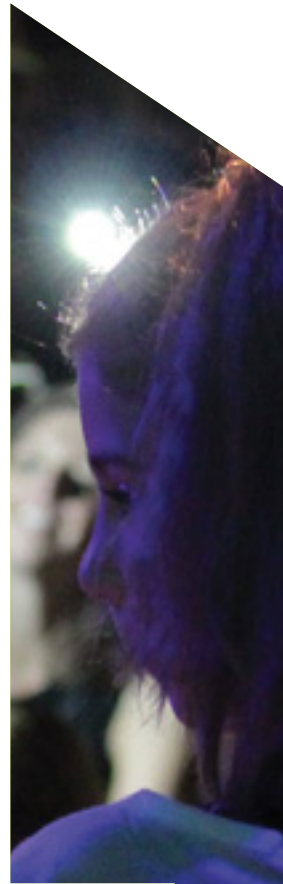


4Culture Annual Report 2015





Letter from the Executive Director and Board President

4Culture doesn't begin any year with a theme in mind. It is only at the end of the year, when we are looking back, that we see our programs, initiatives and activities revolving around a common subject. 2015 was a year of "Building Capacity."

The most highly visible of our 2015 initiatives was a partnership between 4Culture, the King County Executive, and County Council to make an unprecedented \$28 million investment in cultural facilities in every corner of 2,200 square mile King County. King County encompasses urban centers, suburban cities, rural farmland, and national forests. Theaters, museums, cultural community centers, galleries, historic farmsteads, cultural landscapes, parks, barns, and landmark structures define our unique sense of place. As our region's population increases dramatically, Building for Culture will expand the infrastructure for arts, heritage and culture to meet the growing needs of our diverse communities.

In 2015, 4Culture Heritage completed a two-year program engaging local history museums with the American Association for State and Local History Standards and Excellence Program, or, StEPs—a self-study curriculum that builds local history museums' capacity to steward collections, build audiences, and govern effectively. King County now has more local museums enrolled in StEPs than any state in the nation except for Texas. StEPs King County has significantly enhanced the capacity of these small museums.

Our Public Art program used capital funds generated by the construction of the new King County Children and

Family Justice Center to implement Creative Justice, an arts-based alternative to youth incarceration. This program will minimize the need for detention, and increase the capacity of youth to find their place in the world.

4Culture's Preservation program has a mandate to advocate for the values of preserving historic structures, but is also one of the few programs that goes beyond advocacy to fund bricks-and-mortar rehabilitation. A great example is Bob's Quality Meats—a family-owned business in Columbia City, which was damaged by fire, temporarily closing the business. When insurance did not fully restore the building, a Building for Culture grant allowed Bob's to re-open to the diverse communities they serve and count as neighbors. And in 2015, the third year of Open 4Culture built capacity for artists through this no-deadline, easy-access alternative to our annual funding programs, which were not reaching many of King County's immigrant and refugee populations.

We are creating a way to forge relationships with our newest neighbors. In this report you will learn about Humaira Abid, an artist who immigrated to Seattle from her native Pakistan in 2008, applied for an Open 4Culture grant, and by 2015 had exhibited widely at other venues. For 4Culture, 2015 was a banner year. Check out just a few of the highlights here in our annual report—we can't wait to see what 2016 brings.

Alka Badshah
Board President

Jim Kelly
Executive Director

Restored worker's cabin will relocate to the new Latino Museum & Cultural Center © 2015 MASON TRINCA/Yakima Herald-Republic.



Humaira Abid, © 2014 KCTS9, photo by Laila Kazmi.

SPOTLIGHT ON HUMAIRA ABID

4Culture grants help fund everything from kites to kilns, surveys to screenplays, but an application submitted in 2013 to our Open 4Culture program presented a first: grants for ants.

Open 4Culture is all about expanding reach—ours, and the reach of individuals and organizations who are brand new to 4Culture and, often, to the grant process in general. The program makes small grants available to first-time applicants living and working outside of Seattle. After beginning her career in Lahore, Pakistan, artist Humaira Abid relocated to King County, ready to grow and explore. In her Open4Culture application, she stated unequivocally, “I want to take traditional mediums and do something new and better.”

Humaira put her Open 4Culture grant to work purchasing fabricated ants. The extremely realistic insects unified a

collection of intricate wood sculptures she created for the Bellevue Art Museum’s 2014 Biennial: Knock on Wood. In 2015, from the springboard of Open 4Culture—her first grant application experience in the U.S.—Humaira went on to receive a 4Culture Art Projects grant and funding from other organizations, sit on panels and juries, show her work in galleries and museums across the region, and more. Local television station KCTS 9 profiled Humaira’s work in an Emmy-nominated segment, and she has continued to garner regional, national, and international attention.

Watch for Humaira this year as she and her work continue to flourish. She’s given us fair warning that, with a new body of work, she is “...pushing boundaries of mediums and concepts and aims to take them to a level that has not been done before.”

“Open 4Culture gave me the opportunity to experiment, to push the boundaries of mediums and concepts. It opened the doors to more grants, public speaking, juror on panels, gallery and museum shows...”

Humaira Abid

PROGRAMS

Projects

Applicants	Awardees
Groups 120	Groups 57
Individuals 269	Individuals 69
Amount awarded	
Groups \$230,000	
Individuals \$370,500	

Sustained Support

Applicants 303
Awardees 291
Amount awarded \$1,750,000

Historic Site Specific

Applicants 27
Awardees 14
Amount awarded \$134,954

Emergency/Unforeseen Opportunities

Awardees 4
Amount awarded \$35,000

Artists Up

This unique partnership with the Seattle Office of Arts & Culture and Artist Trust works to better meet the needs of all artists and specifically artists of color. In 2015, we released a comprehensive report and are putting it to work to create positive change in our grantmaking processes.

Touring Arts Roster

We celebrated the 30th anniversary of the Touring Arts Roster by adding more new acts than ever before, and by reintroducing an incentive program for booking TAR artists.



SPOTLIGHT ON **STEPS 4CULTURE**

Heritage organizations across the country look to the American Association for State and Local History’s Standards and Excellence Program or, StEPs—as a model for quality. This rigorous self-assessment curriculum sets the national standard, and is challenging for even the largest, best funded of organizations—so where does that leave a local, volunteer-run historical society?

Bringing together a powerful combination of professional development, mentorship, peer support, and grants, StEPs 4Culture guides cultural organizations across King County through the national curriculum. It harnesses the expertise and support of King County’s interconnected heritage community to strengthen their work. Over the course of two years, representatives from more than 30 organizations explored the standards detailed in the national StEPs workbook.

This series of in-depth convenings covered everything from board governance to audience engagement, concluding in October 2015. Several organizations—many from South King County, an area historically underrepresented in cultural conversations—applied for funding to expand their work in StEPs.

The Black Heritage Society of Washington State is one such success story. As a result of their commitment to StEPs, they received funding to implement two key, capacity-building projects in 2016: an all-day board retreat with a 90-day timeline for putting new ideas into action, and a comprehensive assessment of their historic collection of artifacts, documents, and photographs. Watch where this all-volunteer organization takes their new strategies and tools!



Caring for the collection, © 2004 The Black Heritage Society of Washington.

PROGRAMS

Projects	Sustained Support	Collections Care	Emergency
Applicants 64	Applicants 45	Applicants 28	Awardees 1
Awardees 31	Awardees 45	Awardees 16	Amount Awarded \$12,640
Amount Awarded \$199,963	Amount Awarded \$351,000	Amount Awarded \$78,000	



SPOTLIGHT ON **BOB’S QUALITY MEATS**

For a family that has been in the same business for over 100 years, the Ackleys are enthusiastic about trying new things: “We have added hotlinks when African American customers requested them, sourced just the right beef for Ethiopian kitfo, and found goat for other East African customers.” From their store on Rainier Avenue—a building that has changed little since 1892—this family of butchers served a vibrant, dynamic community until a July fire forced them to close for the first time since 1981.

The Bob’s Quality Meats building is a cornerstone of the Columbia City Historic District, with strong stewards in the Ackleys. In the 35 years since purchasing the building—taking over for another family of longtime butchers—they’ve taken pride in maintaining its historic use and character. They bring the same standards to their business practice, sourcing from local farmers and working to keep prices accessible to everyone in the neighborhood.

The burned roof, walls, and second floor—in addition to ruined equipment—would have been an expensive fix for any business. But the Ackleys’ commitment to preserving the historic character of their building added significantly to their costs. These first-time 4Culture grant applicants put Saving Landmarks funds to work both restoring the building’s historic features and bringing it up to modern code, making them well-positioned to serve the community for decades to come. Columbia City celebrated when, on December 9, Bob’s Quality Meats reopened just in time to fill holiday orders.

“It is certainly significant for us as a family, but we think it’s a big deal for the neighborhood, and a big deal for Seattle as a city, too.”

James Ackley

PROGRAMS

Projects

Applicants 19
Awardees 12
Amount Awarded \$85,000

Landmarks Capital

Applicants 45
Awardees 16
Amount Awarded \$270,000

Sustained Support

Applicants 20
Awardees 19
Amount Awarded \$90,000

Emergency

Awardees 3
Amount Awarded \$16,445



SPOTLIGHT ON CREATIVE JUSTICE

In response to research showing the growing failure of juvenile incarceration, our region has done remarkable work to move in a new direction. However, not all young people have benefited equally: almost three quarters of juvenile detention admissions in 2014 were youth of color. King County and the City of Seattle have committed to ending this racial disproportionality, and the community has called for an end to youth detention. Creative Justice is an innovative approach to this regional effort, offering an arts-based alternative to incarceration for court-involved young people, designed to effect individual and systemic transformation.

Experienced Mentor Artists engage participants in multi-disciplined arts learning experiences that consider the root causes of incarceration. The program uses art to amplify youth voices, provides the creative tools for understanding their circumstances, and equips them with skills to be leaders in the community. In exchange for their creative work, youth receive community service credit and stipends that help pay court fines. At the end of each session, youth produce actions and events where they share their creativity, vision, and new abilities.

In its pilot year, Creative Justice made real, lasting impact in the lives of participants. Youth formed relationships with artists and each other, and made powerful art that speaks to the need for change.

Harborview Medical Center Window Treatment

Four artists designed murals for sky bridges at Harborview Medical Center. The imagery was digitally printed onto transparent vinyl film and applied to the windows—creating translucent murals to amplify light, beautify corridors, and create privacy for patients.

Lake to Sound Trail Kit of Parts

Artists Jenny Heishman and Kurt Kiefer designed a “Kit of Parts”—12 interchangeable sculptural components—to connect and unify the 16-mile Lake to Sound Trail, which passes through five cities and will be built in phases.

Poetry on Buses: Writing Home

Poetry on Buses invited King County to create, share, and experience poetry—on the theme of “Writing Home”—on the bus, online, and in communities. 365 poems in five languages were displayed on buses, stations, and in an online poetry portal, which received over one million page views.

Creative Justice

Creative Justice is an arts-based alternative to incarceration for King County youth. In 2015, 48 participants collaborated with Mentor Artists to consider the root causes of incarceration and focus on the positive role youth can play in society. As a result, 31 charges against participants were dismissed.



“As the most important force for good in King County’s cultural world, 4Culture’s imprimatur means the world to us.”

Elizabeth P. Stewart,
Renton Historical Society



Above: Ben Zamora, *MANDALA*, 2015. Photo by Oliver Endahl.
Facing page, from left: Green stage, © 2015 Shakespeare in the Park.
Washington Hall restoration, © 2015 Sean Stearns.



PROJECTS

Open 4Culture

Applicants 32
Awardees 21
Amount Awarded \$28,050

Equipment

Applicants 158
Awardees 59
Amount Awarded \$310,000

Building for Culture

Applicants 119
Awardees 100
Amount Awarded \$28,416,716

4Culture’s four program areas—Arts, Heritage, Preservation, and Public Art—bring expertise and focused attention to the King County individuals and organizations working in these fields. But it’s also important to recognize that a lot of that work bridges discipline, creating rich, multi-dimensional cultural experiences for County residents. These grant programs support projects that defy categorization.

Open 4Culture

This program lives up to its name by providing a low-barrier entry point to 4Culture, and to the competitive grant process in general. Through small grants of up to \$1,500 that have no deadline, Open 4Culture augmented both our reach in underserved areas and the capacity of innovative cultural doers in 2015.

Equipment

Museum shelving, stage lights, ceramic kilns—on their own they may not seem like much, but in the hands of King County’s incredible cultural organizations, they add up to a lot. Cultural Equipment grants supported critical needs across King County this year.

Building for Culture

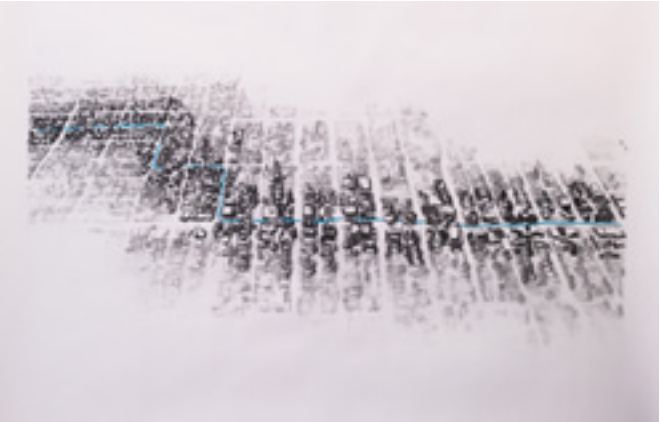
With the early retirement of the County’s King Dome debt, 4Culture and the King County Council partnered to make a historic, one-time investment of \$28 million in our region’s cultural infrastructure. Organizations of all disciplines and sizes from every corner of King County received funding—see how they grow and transform in 2016!



Gallery4Culture

What began as an informal exhibition program on our office walls in 1979 has grown into a vital cultural resource and an instrumental launch pad for King County artists. 2015 saw a roster of dynamic and boundary-pushing shows in the gallery—from individual artists to collectives, photography to interactive installations, and everything in-between.

January Ken Kelly	May Emma Jane Levitt	October Robert Twomey and Matthew Whitney
February John Radtke	June Christopher Buening	November Alexander Mouton
March Duwamish Residency Artists	July Let's	
April Kimberly Trowbridge	September Sadie Wechsler	



Images (clockwise from top): Sadie Wechsler. *Eruption*, 2012. Inkjet print, 64 x 84 inches. Ken Kelly, *Eyes and Ears*, 2012. Oil on canvas, 84 x 96 inches. Photo by John Hollingsworth. Matthew Whitney, *Movement Must Also Move*, 2015. Graphite and pastel on paper, 34 x 60 inches.



e4c

The next time you find yourself walking, riding, or cycling by our offices on Prefontaine Place South, take a minute to enjoy some of the country's most dynamic digital art, displayed on our wall of state-of-the-art screens. e4c—or, electronic 4Culture—puts filmmakers, animators, and designers in front of the public every day.

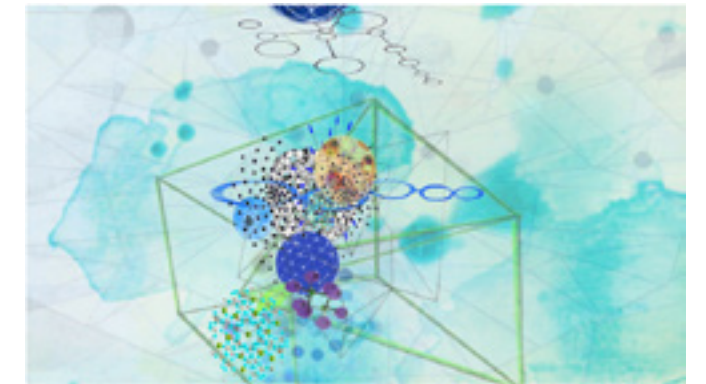
2015 brought a major technology overhaul and upgrade, revitalizing the viewer experience. When equipment from 2008 started showing the wear of operating for 15 hours daily, we re-imagined the system, working with local contractors to design and install the simple new e4c. The result is an intimate and immersive street-front experience. It offers artists more flexibility and presents their stunning media work in vibrant, rich color.

After this hiatus, the second half of 2015 was a celebration of exciting media on e4c, with pieces by five artists—selected from a pool of 35 applicants from across the United States—coming to life on our new screens. New work continues to be added to the rotation—make sure to make time for this unique, urban experience.

2015 e4c artists:

Evertt Beidler
Joseph Gray
Tess Martin
Barbara Robertson
Joseph Farbrook

Facing page (from top): Tess Martin's *Part of the Cycle* at e4c, Photo © 2016 Sean Stearns. This page (from top): Barbara Robertson, *Accumulation*, 2015. e4c at the Gates Foundation, © Andrew Pogue.



Looking Ahead

As our region evolves, 4Culture is doing the same.

2016 brings a roster of programs and initiatives that see us working in new ways—new partnerships, new ideas, new models. We’re excited to announce our Equity & Inclusion Initiative, identifying and supporting communities and groups we don’t yet fully serve, and building the strength of groups who do serve those King County citizens. We’ll offer grants up to \$25,000 and technical assistance on a wide-open, no-deadline schedule beginning this summer with a goal of increasing access to every 4Culture program. Stay tuned!

Artists Up—an inter-agency partnership between 4Culture, the City of Seattle Office of Arts and Culture, and Artist Trust—is a key component in learning how to better serve our communities. In 2016, Artists Up will continue to focus on improving the panel process—a central concern for underserved artists. Material collected from focus groups and networking events is currently being evaluated by Artist Ambassadors. A new panel model will be developed from this research and an experimental pilot grant program will test the model. The ultimate goal is to identify ways to provide greater access and foster successful results for artists that are frequently excluded from the grant process at large.

2015 marked the 25th anniversary of the Americans with Disabilities Act and the fifth year since major changes were made to improve national standards. As a key supporter of equipment and building improvements, 4Culture takes this seriously—helping patrons with disabilities enjoy performances and exhibits is a priority for us. In 2015, 4Culture, in partnership with Let’s Loop Seattle, supported hearing loop systems for Town Hall Seattle, Seattle Repertory Theater and The Theater at Meydenbauer. Our vision for 2016 is to make sure every public cultural facility throughout the County has the information and equipment



Welcome to Our Native Land Coastal Day & Pow Wow, © 2015 Kim Camera.

needed to provide full access to great arts and heritage experiences.

Making public spaces engaging for all is a 2016 priority for our Public Art department as well. 4Culture and King County’s Wastewater Treatment Division have commissioned artist team Sans façon to develop an art master plan for the Combined Sewer Overflow (CSO) system. The CSO system is designed to reduce the amount of wastewater flowing into Seattle lakes, the Duwamish River, and Puget Sound, and the plan will lay a framework for art experiences that reveal this hidden system. Water will also be central to a public art program that is not new, but expanding in very new ways in 2016—Poetry on Buses. The beloved program will return, featuring new partnerships with the City of Seattle Public Utilities and Sound Transit. Poems will explore our region’s relationship to water and will appear on buses, light rail, and streetcars. In the summer, another piece of our transit system will be infused with art, as the SODO Track comes to life. The 2.5-

mile stretch of 4th Avenue South leading into downtown Seattle will host street and mural artists from around the world as they transform this corridor into a cohesive, transfixing art experience.

This is a small look at our robust plans for 2016. Then, in 2017, we’re looking forward to celebrating our organization’s 50th anniversary. Although we’ve undergone a few name changes, this represents half a century of thrilling cultural work in King County. We’re proud to be a part of a community that supports us, and eager to see where we can go.

Our Community

Staff

Jim Kelly
Riza Almanza
Tamar Benzikry-Stern
Cath Brunner
Anna Callahan
Christina DePaolo
Heather Dwyer
Ryan Feddersen
Bret Fetzer
Jordan Howland
Heidi Jackson
Noy Kitnikone
Phung Lam
Raya Leary
Flo Lentz
Brandi Link
Esther Luttikhuizen
Doreen Mitchum
Melissa Newbill
Charlie Rathbun
Lauren Semet
Sean Stearns
Eric Taylor
Debra Twersky
Bill Whipple

Board of Directors

Alka Badshaw, President
Robin Avni, Vice President
Kirstin Haugen, Secretary
Alan Cornell, Treasurer
Tracey Wickersham, Member at Large
Stephen Elliott
Felicia Gonzalez
Tom Ikeda
Patricio Mendoza
Chris Moore
Ana Pinto da Silva
Nate Robinson

Mitchell Shepherd
Heather Trescases
Hollis Wong-Wear

Ex Officio Board Members

Kathy Lambert, King County Council District 3
Joe McDermott, King County Council District 8
Larry Phillips, King County Council District 4

Advisory Committees

Arts

Shelley Brittingham
Lawrence Ellis
Stephen Elliott
Bernie Griffin
Joshua Heim
Dan Mayer
Bryan Ohno

Heritage

Brian Carter
Cassie Chinn
Maya Farrar
Kevin Henry
Nancy McKay
Eric Nelson
Chieko Phillips
Heron Scott
Heather Trescases
Preservation
Richard Anderson
Brooke Best
Manish Chalana
Nathaniel Howe
Chris Moore
Krista Whitters
Eugenia Woo

Public Art

Alka Badshaw
Lucrecia Blanco
Cris Bruch
Stefano Catalani
Maria Gamboa
James Hughes
Selina Hunstiger
Mark Johnson
Erika Dalya Massaquoi

Panelists

Humaira Abid
Ben Andrews
Jillian Andrews
Shawn Belyea
Nilki Benitez Wherrette
Erin Elyse Burns
Mary Pat Byrne
Kim Camara
Davis Caroline
Brian Carter
Manuel Cawaling
Manish Chalana
Katie Chase
Robin Cole
Jaclyn Commodore
Aaron Counts
Webster Crowell
Jessie Cunningham
Alex Curio
Rebecha Cusack
Owen David
Tom Drugan
Amy Dukes
Stephen Elliott
Lawrence Ellis
Jason Everett
Taidi Fang
Maya Farrar
Baso Fibonacci
Rainbow Fletcher
Ricardo Fraser

Randi Ganulin
Keith Gillin
Kate Godman
Erin Goodman
Felicia Gonzalez
Ruth Gregory
Miguel Guillén
Kamea Hadar
Laura Haddad
Jeppa Hall
Brad Hampton
Iyun Harrison
Joshua Heim
Ellen Hochberg
Doug Honeyman
Lauren Hoogkamer
Mari Horita
Douglas Howe
Peter Hummel
Abby Impanbutr
Anthony Jackson
Chris Jenkins
Aron Johnson
Cyrus Khambatta
Kay Kornovich
Lissa Kramer
Doug Landерth
Pamela Lavitt
Carolyn Law
Stephanie Lile
Allison Loveland
Vikram Madan
Karen Marshall
Savina Mason
Annett Mateo
Maija McKnight
Our Community
Colleen McPoland
Jennifer Meisner
Patricio Mendoza
Heather Miller
Chris Moore

John Morefield
Dirk Mosis
Jennifer Navva Millikin
Richard Nelson
Sean Nelson
Nate Omdal
Christina Orbé
Sara Marie Ortiz
Rebecca Ossa
Mary Ann Peters
AC Petersen
Chieko Phillips
Steve Ramsey
Peter Reiquam
Matthew Richter

Aaron Rubardt
Lynn Schirmer
Heron Scott
Sheryl Shiefel
Lara Simmons
Suzanne Simmons
Delila Simon
Dale Smith
Susan Sobel
Joseph Steininger
Daniel Stoner
David Strauss
Doug Streeter
Barbara Swift
Miho Takekawa

Zorn Taylor
Suzanne Tidwell
Heather Trescases
Jeremy Webb
Storme Webber
Dick Weiss
Deborah Westwood
Krista Whitters
Tracey Wickersham
Bryan Yeck



DK Pan
Time is Memory
© 2014. Photo by DK Pan.



Cheronna, *Worth My Salt*, 2015. Photo by Jody Kuehner.

Grant Recipients

- 10 Degrees** Sustained Support

206 Zulu Sustained Support, Equipment

501 Commons Community Partner

5th Avenue Theatre Association Sustained Support, Emergency, Building for Culture: *New State-of-the-Art Sound System*

A Contemporary Theatre (ACT) Sustained Support, Building for Culture: *Repairing and Restoring ACT's Interiors and HVAC*

Tarik Abouzied Art Projects: *Jazz Project Development, Recording, and School Presentations*

Academy of Music Northwest Sustained Support

ACIT Seattle Sustained Support, Equipment

***James Ackley, Bob's Meat Market/Nelson's Butcher Shop,** Seattle Building for Culture: *Reconstruction and Restoration After Fire*

***Admiral Cinema,** Seattle Building for Culture: *Admiral Theater Renovation*

AfroLatino Festival Art Projects: *Afrolatino Festival Seattle 2015*

***Jordan Alam** Open 4Culture

Alliance for Pioneer Square Sustained Support

Allied Arts of Renton Art Projects: *Fall Family Concert*

American Romanian Cultural Society Art Projects: *The 2nd Romanian*
- Film Festival in the Pacific Northwest*

Paul Anastasio Art Projects: *New Works in the Living Tradition of Mexico's Hot Lands*

Annex Theatre Sustained Support

***Stephen Anunson** Art Projects: *The Boy Who Lived Before*

Rick Araluce Art Projects: *The Great Northern*

Arc Dance Productions Sustained Support

***Jo Ardinger** Art Projects: *PERSONHOOD*

ArtEast Sustained Support, Equipment

Artist Trust Sustained Support

Artist Up Community Partner

Arts Alive! Sustained Support

Arts and Visually Impaired Audiences Sustained Support

ArtsEd WA Community Partner

Arts Corps Sustained Support

Arts of Kenmore Sustained Support

***Arts Unlimited of Renton** Sustained Support

ArtsFund Community Partner

ArtsWest Sustained Support

Association of King County Historical Organizations AKCHO Community Partner

Auburn Performing Arts Center Sustained Support

*First-time grant recipient

- Auburn Symphony Orchestra** Sustained Support

***Aurora Theatre Company** Art Projects: *Fiddler on the Roof*

***Backbone Campaign** Sustained Support

Bailadores de Bronce Sustained Support

***Anna Balint** Art Projects: *Words from the Cafe*

***John Harry Baluran** Art Projects: *The Soufend Art Show*

***Paul Barry, Louis S. Marsh House, Kirkland** Building for Culture: *Window Restoration*

***Sarah Bassingthwaighte** Art Projects: *House of Doors Concerto for Flute and Orchestra*

Beacon Arts Sustained
- Support

***Corrie Befort** Art Projects: *A Rendering*

Bellevue Arts Museum Sustained Support, Community Partner

Bellevue Chamber Chorus Sustained Support

Bellevue College Foundation Sustained Support

Bellevue Downtown Association Art Projects: *Bellevue Jazz Festival*

Bellevue Youth Symphony Orchestra Sustained Support

Bellevue Youth Theatre Sustained Support

Bells of the Sound Sustained Support

***Cara Bertron** Heritage

- Projects: *Road Story: People and Place on Rainier Ave South*

***Bing Kung Bo Leung Incorporated, Bing Kung Association Building, Seattle** Building for Culture: *Seismic Upgrades*

Black Diamond Historical Society Sustained Support, Equipment

***Blanca Santander** Art Projects: *Daughters of Immigration*

Blessed Sacrament Church, Seattle Building for Culture: *Stained Glass Window Restoration*

Blue Earth Alliance Sustained Support

Blue Street Jazz Voices Sustained Support

Book-It Repertory Theatre
- Sustained Support

Bothell Historical Museum Society Sustained Support

***Brain Injury Alliance of Washington** Art Projects: *Brain Injury Art Show*

***Brazil Arts & Education LLC** Art Projects: *Steps*

Brazil Center for Brasilfest Sustained Support

***Tanya Brno** Art Projects: *Downriver Hymns*

Broadway Bound Children's Theatre Sustained Support

Sheri Brown Art Projects: *GALAANZA III Sea Hawk Spirit Seeks Justice*

***Tyrone Brown** Historic Site Specific: *The Slave Ship Project*

*First-time grant recipient



Eroyn Franklin and Tory Franklin, *Fecund* (detail). Vinyl on window. © 2015, photo courtesy of the artist.



Etienne Cakpo performing
*Dance Garden: A Celebration
of World Dance and Music*,
2015 © Erick Stuhaugh.

***Paul Budraitis** Art Projects:
*World premiere of Emily
Conbere’s Knocking Bird*

**Bulgarian Cultural and
Heritage Center of Seattle**
Sustained Support

Burien Actors Theatre
Sustained Support

Burien Arts Association
Sustained Support

Burke Museum Association
Sustained Support,
Equipment, Building for
Culture: *The New Burke*

Bus Shelter Mural Program
Art Projects: *Mirroring Life:
Photographic Artworks on
Bus Shelters*

***Meg Bye** Historic Site
Specific, Installation

The Cabiri Sustained
Support

Etienne Cakpo Art Projects:
*DanceGarden: A Celebration
of World Dance and Music*

Eduardo Calderón
Preservation Special
Projects: *Bridges in King
County*

**Camlann Medieval
Association** Sustained
Support

Cascade Foothills Chorale
Sustained Support

**Cascade Performing
Arts Council** Sustained
Support

Cascadian Chorale
Sustained Support

***Claudia Castro Luna**
Art Projects: *How to Say
Goodbye*

Center for Wooden Boats
Sustained Support, Heritage
Projects: *Lake Union
History—From the Water*,
Building for Culture: *The
Wagner Education Center*

**Center on Contemporary
Art (CoCA)** Sustained
Support

**Centerstage Theatre Arts
Conservatory, Inc.** Sustained
Support, Equipment

***Central Area Senior Center**
Building for Culture: *Green
Dolphin, Entertaining
Seniors and the Community*

**Central District Forum
for Arts & Ideas** Sustained
Support

***Ceol Cascadia** Sustained
Support

Chamber Music Madness

Sustained Support

Jessie Chen Art Projects:
*Beneath Tiananmen Square:
Diaspora & Burial*

***Chief Seattle Club**
Equipment

**Children’s Music
Foundation** Community
Partner

**Chinese Arts & Music
Association** Sustained
Support

Choir of the Sound
Sustained Support

**Chong Wa Benevolent
Association, Chong Wa
Hall**, Seattle Preservation
Special Projects: *Chong Wa
Rehabilitation Plan*, Building
for Culture: *Expanding
Functionality*

Choral Arts Sustained
Support

***CIRCC (Coalition of
Immigrants, Refugees &
Communities of Color)**
Equipment

City of Auburn Sustained
Support, Equipment,
Building for Culture:
*Creation of the Auburn Arts
Center*

City of Bellevue Sustained
Support, Building for
Culture: *Bellevue Youth
Theatre Programming
Opportunities and Code
Improvements*

City of Bothell Sustained
Support, Art Projects: *Music
in the Park*

City of Burien Sustained
Support, Building for
Culture: *Repairs and
Improvements for the
Moshier Art Center*

City of Des Moines
Sustained Support, Building
for Culture: *Covenant
Beach Sun Home Lodge
Restoration Project*

City of Duvall Sustained
Support, Building for
Culture: *Mobile Stage*

City of Enumclaw Sustained
Support

City of Federal Way
Sustained Support, Building
for Culture: *Performing Arts
& Event Center*

City of Issaquah Sustained
Support

City of Kent Sustained
Support

*First-time grant recipient

City of Kirkland Sustained
Support, Preservation
Special Projects: *Landmark
Nominations*

**City of Mercer Island
Arts Council** Sustained
Support

City of Newcastle
Equipment

**City of Normandy Park
Arts Commission** Sustained
Support

City of Redmond Sustained
Support

City of Renton Sustained
Support

City of Sammamish
Sustained Support

City of SeaTac Sustained
Support

City of Seattle Sustained
Support

**City of Shoreline Public
Art** Building for Culture:
*Shoreline Veterans
Recognition Plaza*

City of Snoqualmie
Sustained Support

City of Tukwila Sustained
Support, Building for
Culture: *Duwamish Hill
Preserve - Puget Sound
Salish Cultural Garden*

Clarion West Sustained
Support

**Classical KING FM
98.1** Sustained Support,
Equipment

Anna Conner Art Projects:
*Exercises for the unrested:
The kingmaker*

***Copper Canyon Press**
Sustained Support

Coriolis Dance Collective
Sustained Support

Coyote Central Sustained
Support, Building for
Culture: *HVAC for Coyote
Central*

DAIPANbutoh Sustained
Support

***Kate Dandel** Art Projects:

Gold Balls

***Dandylyon Drama**
Sustained Support

Savvy Dani Art Projects:
Face on the Wall

DASSdance Sustained
Support

Michelle de la Vega Art
Projects: *SUCCESSION*

Deaf Spotlight Sustained
Support

***Carina A del Rosario** Art
Projects: *Passport Office and
Series*

**Delridge Neighborhood
Development Association**
Sustained Support,
Emergency, Preservation
Special Projects: *Cooper
School Site Planning*,
Building for Culture: *Elevate
Youngstown*

Delta Masonic Temple
Landmarks Capital: *Re-
Roofing*, Building for Culture:
Masonry Restoration

August Denhard Art
Projects: *The Silk Road:
Trade and the Currency of
Music*

**Densho: The Japanese
American Legacy Project**
Sustained Support,
Equipment, Heritage
Projects: *Digitizing Photos
for Japanese American Oral
Histories*

**Des Moines Historical
Society** Sustained
Support

**Des Moines Memorial
Drive Preservation
Association** Preservation
Special Projects: *Web Site
Development to Promote
DMMD History and Future
Centennial Celebrations*

***Design in Public** Sustained
Support

Discover Your Northwest
Open 4Culture

***Dock Street Properties,
Hansen Building**, Seattle

*First-time grant recipient



Ruth Coughlin performing *Within
the Silence for Living Voices*,
2015 © Michael McClinton.



Saul Williams at Seattle Arts and Lectures, 2015
© Libby Lewis Photography

Building for Culture: *Seismic Retrofit*

Docomomo WEWA Sustained Support

Drama Dock Sustained Support

***Dreams Unlimited** Art Projects: *#DreamsUnlimited @KING COUNTY*

Duvall Foundation for the Arts Open 4Culture, Building for Culture: *Community Arts Center (Thayer Barn)*

Duvall Historical Society Sustained Support

Duwamish Tribal Services Sustained Support

Early Music Guild of Seattle Sustained Support

Earshot Jazz Society of Seattle Sustained Support

Eastside Heritage Center Sustained Support, Collections Care, Community Partner

Eastside Nihon Matsuri Association Art Projects: *Aki Matsuri 2015*

Eastside Symphony Sustained Support

EB Dunn Historic Garden Trust Sustained Support, Emergency, StEPs 4Culture Capacity Building Grant

Eclectic Theater Company Sustained Support

El Centro de la Raza Equipment, Art Projects: *Dia de los Muertos 2015/2016*, Heritage Projects: *Nuestra Historia, Nuestra Comunidad: Our History, Our Community*, Building for Culture: *Plaza Roberto Maestas Multi-Cultural Community Center*

***Emerald City Ringers** Sustained Support

EMP Museum Sustained Support, Equipment

***Amy Enser Art Projects:** *The Buckaroos All-Male Revue Documentary*

Josephine Ensign Heritage Projects: *Skid Road: The Intersection of Health and Homelessness*

***Enumclaw Expo and Event Center, Enumclaw Fieldhouse** Building for Culture: *Interior and Exterior Repairs*

Enumclaw Plateau Historical Society Sustained Support

***Eritrean Association In Greater Seattle** Building for Culture: *Eritrean Community Kitchen*

Esoterics Sustained Support

Ethnic Heritage Council Sustained Support

Evergreen Association of Fine Arts Sustained Support

Evergreen City Ballet Sustained Support, Equipment, Building for Culture: *ECB Facility Improvements*

Evoke Productions Sustained Support

***Kimberly Ewing** Open 4Culture

Extraordinary Futures Sustained Support

Fall City Arts Sustained Support

Fall City Historical Society Sustained Support

Federal Way Chorale Sustained Support

Federal Way Harmony Kings Sustained Support

Federal Way Symphony Sustained Support



Poetry on Buses Road Show at Northwest Folklife, 2015,
© Timothy Aguero Photography.

Donald Fels Historic Site Specific: *Marie Louie Project*

Filipino Cultural Heritage Society of Washington Art Projects: *Pista Sa Nasyon 2015*

***Finn Hill Neighborhood Alliance** Open 4Culture

Floating Bridge Press Sustained Support

Flying House Productions Sustained Support, Equipment

Gabriela Frank Art Projects: *Ugly Me*

***Margaret (Noel) Franklin** Art Projects: *Girl On A Road*

Freehold Theatre Lab Studio Sustained Support, Building for Culture: *New home for Freehold*

Fremont Abbey Arts Center Equipment

Friends of Eastside Arts Equipment

Friends of Gas Works Park Historic Site Specific

***Friends of Jimi Hendrix Park** Building for Culture:

Central Shelter at Jimi Hendrix Park

Friends of KEXP Sustained Support, Equipment, Building for Culture: *KEXP's New Home at Seattle Center*

Friends of Magnuson Park Sustained Support

Friends of Mukai Sustained Support, Equipment, Building for Culture: *Mukai House Restoration*

***Friends of Recovery Café** Emergency

Friends of Seattle's Olmsted Parks Sustained Support

***Friends of the Ballard Locks** Open 4Culture

Friends of the Conservatory Sustained Support

Friends of the Market Sustained Support

Friends of Third Place Commons Equipment, Art Projects: *Music 101: Musical Genres Across Generations*

Friendship Adventures Open 4Culture

From Within Nucleus Art Projects: *ORIGINS OF DANCE: A Hindu Mythological Legend*

Frye Art Museum Sustained Support

Gage Academy of Art Sustained Support

Gallery Concerts Sustained Support

Gamelan Pacifica Sustained Support

Gay City Health Project Sustained Support, Equipment

***Ari Glass** Art Projects: *The Sun Is Made Of Gold*

Craig Glazier, Sunset Garage, North Bend Landmarks Capital: *Storefront and Canopy Restoration*, Building for Culture: *Exterior Rehabilitation*

***Good Ground, Remlinger Farms, Carnation** Building for Culture: *Barn Restoration*

John Grade Art Projects: *Transplant*

***Joseph Grady, Neighbor-**

Bennett House, Fall City Landmarks Capital: *Porch Restoration*

Grand Illusion Cinema Sustained Support

Greater Kent Historical Society Sustained Support

Greater Seattle Bureau of Fearless Ideas Sustained Support, Equipment, Heritage Projects: *Our Universe of Greenwood: Youth Stories about Our History, Our Present, and Other Inspirations*

Green River Community College Foundation Sustained Support

GreenStage Sustained Support, Equipment

Mandy Greer Art Projects: *Labor Lost*

***Richelle Gribble** Art Projects: *MERGE: connectors, hubs, and links*

Stephen Griggs Historic Site Specific: *Listen to Seattle*, Art Projects: *Panama Hotel Jazz Performance Extension*

*First-time grant recipient

*First-time grant recipient



STUDY OF TIME AND
MOTION: connect/reposition
performed at the Georgetown
Steam Plant, 2015 © Bruce Tom

Workboats at Lake Union Park,
© 2015, Northwest Seaport.



***Miguel Guillen** Community Partner

***Ricardo Guity** Art Projects: *WAGARAOUN*(Our Ancestors Drum)

***Wayne Gullstad, Neilson Barn, Snoqualmie Valley** Building for Culture: *Structural Repairs*

***Bridget Gunning** Art Projects: *Simulacra*

***Joy Hagen** Open 4Culture

***P. Mark Hannum, Columbia Motors Building, Seattle** Landmarks Capital: *Storefront Rehabilitation*

***Merna Ann Hecht** Open 4Culture

Hedgebrook Sustained Support

Henry Art Gallery Association Inc Sustained Support

Highlands Council Art Projects: *I AM Program by the PNWAAQ Association*

Highline Botanical Garden Foundation Sustained Support

Highline Community Symphonic Band Sustained Support

Highline Historical Society Sustained Support, Collections Care, Heritage Projects: *Update Highline Historical Society website, Building for Culture: Highline Heritage Museum Building Renovation*

Hi-Liners Inc Sustained Support

Historic Seattle Sustained Support, Landmarks Capital: *Good Shepherd Center Window Restoration, Building for Culture: Completing the Rehabilitation of Washington Hall*

Historic Seattle Sustained Support

Historical Society of

Federal Way Sustained Support, StEPs 4Culture Capacity Building Grant

History Ink Sustained Support, Historic Site Specific: *Jazz Intoxication Project, Heritage Projects: People, Places, and Resources: Looking at the History of Watersheds*

Hollow Earth Radio Sustained Support

Holocaust Center for Humanity Sustained Support, Equipment, Heritage Projects: *Exploring King County Heritage Testimonies, Building for Culture: New Holocaust Center for Humanity Exhibit*

***Rudy Horn** Art Projects: *Out of the Rough*

Wayne Horvitz Historic Site Specific: *11 Places for Ricard Hugo*

Rochelle House Art Projects:

Fire: The New House Orchestra

***Jason Huff** Art Projects: *The Clay Bin*

Imagination Theatre Art Projects: *Summer Workshop 2015*

INTERIM CDA Equipment

International Capoeira Angola Foundation Sustained Support

***Interstitial Theatre** Sustained Support

Intiman Theatre Sustained Support

Intuitive Learning Systems DBA Valley Center Stage Sustained Support

Iranian American Community Alliance Art Projects: *Seattle Iranian Festival*

***Iraqi Community Center of Washington** Open 4Culture

Issaquah Historical Society

*First-time grant recipient

Sustained Support, Historic Site Specific: *Hobos & Homelessness, Heritage Projects: Depot Playdate Series*

Jack Straw Cultural Center Sustained Support, Building for Culture: *Accessible Bathrooms and HVAC Overhall*

James and Janie Washington Foundation Sustained Support, Building for Culture: *Continued Improvements*

Japanese Cultural and Community Center of Washington Collections Care, Heritage Projects: *Interwoven: A Japanese Community Historical Perspective on Genji Mihara, Building for Culture: Phase II Facilities Preservation and Long Term Operations Plan*

Jazz Night School Sustained Support

Jet City Improv Sustained

Support

***Clare Johnson** Art Projects: *Art for Our Town*

***Ilze Jones, Globe Building, Seattle** Building for Culture: *Exterior Rehabilitation*

***Joyful! Noise** Sustained Support

Melody Kadlub-Barr Community Partner

***Satpreet Kahlon** Art Projects: *Craft School and Residency Professional Development*

***Jeffrey Kahrs** Heritage Projects: *Home and the Sea: Oral Histories of Fishermen from King County*

***Lara Kaminoff** Art Projects: *How to Pick a Fight*

***Jane Kaplan** Historic Site Specific: *The Box House*

Kenmore Community Club Landmarks Capital: *Siding Replacement, Building for Culture: Interior Rehabilitation*

Kenmore Heritage Society Collections Care

Kent International Festival Sustained Support

Khambatta Dance Company Sustained Support

KidsQuest Children's Museum Sustained Support, Building for Culture: *KidsQuest Children's Museum - Good to Grow Capital Campaign*

Paul Kikuchi Historic Site Specific: *Songs of Nihonmachi*

***Dylan (D.K. Pan) Kim** Art Projects: *TIME IS MEMORY (Seattle Sky)*

Eunice Kim Art Projects: *Nontoxic Printmaking: Ten-Year Survey Exhibition*

King County Heritage Projects: *Responding to AIDS: Seattle-King County Department of Public Health Oral Histories, Preservation Special Projects: Red Brick*

Road Condition Inventory and Recommendations

Auburn Masonic Temple Landmarks Capital: *Masonry Restoration, Building for Culture: Restoration of Three Storefronts*

Kirkland Arts Center Sustained Support, Building for Culture: *KAC Capital Improvements Project*

Kirkland Choral Society Sustained Support

Kirkland Heritage Society Sustained Support, Heritage Projects: *2016 Kirkland History Month*

Kirkland Performance Center Sustained Support

***Knot and Burl LLC** Historic Site Specific

***Daniel Kogita** Art Projects: *Diaries of a Mad*

Paul Komada Art Projects: *Monument in Memory: Abstract Alaskan Way*

Kong Yick Investment

*First-time grant recipient



Testing new power hammer,
© 2015, Pratt Fine Arts Center

Company Incorporated, West Kong Yick Building, Seattle Preservation Special Projects: *West Kong Yick Preservation and Development Plan*, Building for Culture: *Canton Alley Curbs*

***Tia Kramer** Historic Site Specific: *Study of Time & Motion*

***Stacey Kroeze, Barton House, Kent** Landmarks Capital: *Window Restoration*

Kubota Garden Foundation Sustained Support, Collections Care, Heritage Projects: *Kubota Garden – A Timeless Refuge*

Robb Kunz Art Projects: *Shout Out*, Historic Site Specific: *Sound Installation*

Ladies Musical Club Sustained Support

Lake Union Civic Orchestra

Sustained Support

Langston Hughes Performing Arts Institute Sustained Support

***James Lapan** Art Projects: *The Ballad of Luis Sojo*

***Latino Theatre Projects** Open 4Culture

Leadership Tomorrow Community Partner

***Maggie Lee** Art Projects: *The Journey of the Bell*

***Samara Lerman** Historic Site Specific: *Snoqualmie Depot Film*

Lit Crawl Seattle Art Projects: *Lit Crawl Seattle 2015*

Live Aloha Hawaiian Cultural Festival Art Projects: *Kahulanui, Headlining Entertainment*

Live Girls! Theater Sustained Support

Living Voices Sustained

Support

Luck Ngi Musical Club Equipment, Art Projects: *Luck Ngi Musical Club 77th Anniversary Celebration*

Macha Monkey Productions Sustained Support

Spike Mafford Art Projects: *Los Mezcaleros*

***Justin Maggart** Art Projects: *Tres Reyes Magos - Bolero, Changüí & Son Cubano*

Magnolia Chorale Sustained Support

Maple Valley Creative Arts Council Sustained Support

Maple Valley Historical Society Sustained Support

Maple Valley Youth Symphony Orchestra Sustained Support

***Maritime Folknet** Sustained Support

Ricki Mason Art Projects: *Kitten N’ Lou are... OVEREXPOSED!*

Master Chorus Eastside Sustained Support

Maureen Whiting Dance Sustained Support

Max Aronoff Viola Institute Sustained Support

***Lori A May** Art Projects: *Writer at Work: Where Passion Meets Profession*

***Kevin McKenna** Heritage Projects: *LGBTQ Activism in Seattle History Project*

Karen Meador Heritage Projects: *Riverboat Round the Bend: Cargo, Commerce and Characters on the Inland Waterways of King County*

Medieval Women’s Choir Sustained Support

Mini Mart City Park Building for Culture: *Mini Mart City Park*

*First-time grant recipient

Mirnesse Women’s Choir Sustained Support

Mirror Stage Art Projects: *Mirror Stage’s staged reading series*

***Irfan Mirza** Open 4Culture

***MLK F.A.M.E. Community Center** Equipment

Moisture Festival Sustained Support

Jordan Monez Historic Site Specific: *Plant 2014*

***Mount Baker Neighborhood Center for the Arts** Equipment, Art Projects: *Workshop and Reception 25th Anniversary of the American with Disabilities Act*

Mount Baker Park Presbyterian Church Building for Culture: *Masonry Restoration*

***Movimiento Afrolatino Seattle** Art Projects: *Afro-*

Latino Arts Education Season, Fall 2015

***Moving Image Preservation of Puget Sound (MIPoPS)** Collections Care

Mt. Si Artist Guild Sustained Support, Emergency

Multimedia Resources and Training Institute (MMRTI) Heritage Projects: *A Video Documentary about Ethiopian Heritage in King County from Individual Ethiopian Perspectives*

Museum of Flight Sustained Support, Equipment, Building for Culture: *Museum of Flight Aviation Pavilion*

Museum of History and Industry Sustained Support, Collections Care, Art Projects: *The Legacy of Seattle Hip Hop Exhibition*, Heritage Projects: *Edible City: A Delicious History*

Exhibit, Building for Culture: *Regional Heritage Collection Preservation Center*

Music Center of the NorthWest Sustained Support

Music Northwest Sustained Support

Music of Remembrance Sustained Support

Music Works Northwest Sustained Support, Building for Culture: *Music Works Facility Renovation Project*

My World Dance Studio Art Projects: *The Ziryab Collective: Celebrations Through Dance*

The Nature Consortium Sustained Support

Neely Mansion Association Sustained Support

New Century Theatre Company Sustained Support

Nordic Heritage Museum

Sustained Support, Collections Care, Building for Culture: *The New Nordic Museum*

North Bend Downtown Foundation Art Projects: *Art and Artist Showings/Receptions*, Heritage Projects: *North Bend Visitor Information and Heritage Map*

Northshore Performing Arts Center Foundation Sustained Support

Northwest African American Museum Sustained Support, Art Projects: *Harmon and Harriet Kelley Art Collection: Art Workshop Series*, Building for Culture: *Strength and Security: Floor and Door Replacement at NAAM*

***Northwest Architectural League** Sustained Support

Northwest Art Center

*First-time grant recipient

Launch of 33.1 Spring Issue, © 2015 Arcade.





A Taste of Home, © 2015 Tay + Val.

Sustained Support, Equipment
Northwest Associated Arts Sustained Support
Northwest Chamber Chorus Sustained Support
Northwest Choirs Sustained Support
Northwest Film Forum Sustained Support, Equipment, Building for Culture: *Facility Renovation, phase III*
Northwest Folklife Sustained Support
Northwest Girlchoir Sustained Support
Northwest Heritage Resources Sustained Support
Northwest Opera In Schools, Etc. Sustained Support
Northwest Puppet Center

Sustained Support
Northwest Railway Museum Sustained Support, Equipment, Landmarks Capital: *Locomotive 924 Boiler Restoration, Heritage Projects Train Shed Tour Package Enhancement, Building for Culture: Railway Education Center*
Northwest Seaport Sustained Support
***Northwest Sinfonietta** Sustained Support
Northwest Symphony Orchestra Sustained Support
On the Boards Sustained Support, Building for Culture: *HVAC Replacement*
Amy O’Neal Art Projects: *Opposing Forces Documentary Part 2*
***OneAmerica** Equipment
Open Space for Arts and Community Art Projects:

PopART Putt Putt at Open Space
Orchestra Seattle / Seattle Chamber Singers Sustained Support
Sean Osborn Art Projects: *Clarinetissimo 2015*
Pacific Ballroom Dance Sustained Support
***Pacific Hospital Preservation & Development Authority, Pacific Medical Tower, Seattle** Building for Culture: *Window Restoration*
Pacific Musicworks Sustained Support
Pacific Northwest Ballet Sustained Support, Building for Culture: *Pacific Northwest Ballet School at the Francia Russell Center Relocation/Construction Project*
Pacific Northwest Railroad Archive Sustained Support,

Collections Care
Pacific Science Center Foundation Landmarks Capital: *Yamasaki Courtyard Renewal Project – Staircase Repair, Building for Culture: Yamasaki Courtyard Renewal Project - Terrazzo Repair, Special Events POMPEII: The Exhibition*
Pacific Sound Chorus Sustained Support
Shin Yu Pai Art Projects: *Heirloom*
Pat Graney Company Sustained Support, Equipment
Path with Art Sustained Support
***Michelle Penaloza** Art Projects: *A Strange Constellation of Desires*
Performing Arts Center Eastside Building for Culture: *Tateuchi Center*
Performing Arts Festival

*First-time grant recipient

of the Eastside Sustained Support
Philharmonia Northwest Sustained Support
Phinney Neighborhood Association Sustained Support, Building for Culture: *The Phinney Neighborhood Association’s Campaign for Accessibility*
Photographic Center Northwest Sustained Support
***Plateau Area Writer’s Association** Open 4Culture
***Erin Pollock** Art Projects: *#LookUpSeattle, A Portrait Project*
Pony World Theatre Sustained Support
Pork Filled Players Sustained Support
Pottery Northwest Sustained Support, Building for Culture: *Raise the Roof*
Prabha Rustagi Memorial

Trust Sustained Support
Pratt Fine Arts Center Sustained Support, Building for Culture: *An Arts-Based Community at Pratt Fine Arts Center*
ProForum Art Projects: *The Social Justice Film Festival*
***Project Room** Sustained Support
***Katherine Pryor** Art Projects: *Read Your Greens*
Puget Sound Access / Carco Theatre Building for Culture: *Carco Theatre Facilities Improvements*
***Puget Sound Educational Service District** Sustained Support
Puget Sound Group of Northwest Painters Sustained Support
Puget Sound Maritime Historical Society Sustained Support
Queen Anne Historical Society Sustained Support,
Prabha Rustagi Memorial

StEPs 4Culture Capacity Building Grant, Preservation Special Projects: *Expanded Queen Anne Historic Context Statement*
***Marilyn Raichle** Art Projects: *The Art of Alzheimer’s: Changing the Way We Think about Alzheimer’s – One Painting at a Time*
Rain City Projects Sustained Support
Rain City Rock Camp for Girls Sustained Support, Equipment
Rain City Symphony Sustained Support, Equipment
***Rainbow City Band** Art Projects: *Commissioned Musical Piece*
Rainier Beach Merchants Association Art Projects: *Art Walk*
Rainier Chorale Sustained Support
Rainier Symphony Sustained Support

Rainier Valley Historical Society Sustained Support
Raven Chronicles Sustained Support
ReAct Theatre (Repertory Actors Workshop) Sustained Support
Redmond Association of Spokenword Open 4Culture
***Redmond Chorale** Open 4Culture
Redmond Historical Society Heritage Projects: *Chicken Farm History Research, Interpretation to Community*
Redmond Historical Society Sustained Support
Reel Grrls Sustained Support
***Grant Rehnberg** Art Projects: *The Family Connection*
Renton Annual Art Show Art Projects: *Renton Annual Art Show*

*First-time grant recipient



Recess Monkey
©2015 Kevin Fry



The Kenmore Community Club before siding is replaced, © 2015
Kenmore Community Club

Renton Civic Theater
Sustained Support

Renton Historical Society
Sustained Support,
Equipment, Collections
Care, Building for Culture:
*Renovate Renton History
Museum Lobby*

Residential Construction
Community Partner

Revive Skykomish LLC
Facilities

Tivon Rice Art Projects:
Façades

Richard Hugo House
Sustained Support, Building
for Culture: *A permanent
home for Hugo House*

**Richmond Masonic Center,
Shoreline** Building for
Culture: *Foundation Repairs*

Ripple Productions
Sustained Support

River Winds Band Sustained
Support, Equipment

**Room Circus Medical
Clowning** Sustained
Support

**Rosebud Children’s Theatre
Conservatory** Sustained
Support

Gregory Ruby Art
and Heritage Projects:
*Syncopated Classic:
Rediscovering the Lost
Compositions of Seattle Jazz
Pioneer Frank D. Waldron*

**Sammamish Heritage
Society** Preservation Special
Projects: *Sammamish
Historic Resource Survey
and Inventory*, Building for
Culture: *Jacob and Emma
Reard House Rehabilitation*

**Sammamish Symphony
Orchestra Association**
Sustained Support

Sarah Samudre Art and
Heritage Projects: *Promised
Land*

**Sand Point Arts and
Cultural Exchange**
Equipment

Sapience Dance Collective
Art Projects: *CONVERGE
2016*

Savani Latin Jazz Quartet

Art Projects: *Participatory
King County Tour*

**Dennis Schilling, Alki
Homestead, Seattle**
Landmarks Capital: *Rooftop
Sign Restoration*, Building for
Culture: *Roof Replacement*

**School of Acrobatics &
New Circus Arts (SANCA)**
Sustained Support,
Equipment

Mary Scott Art Projects: *The
SOLO(s) Project*

**Sea Mar Community Health
Centers** Art Projects: *Fiestas
Patrias 2015*, Building for
Culture: *Sea Mar Latino
History and Cultural Center*

**Seattle Architectural
Foundation** Sustained
Support, Equipment,
Emergency

Seattle Art Museum
Sustained Support,
Equipment, Collections
Care, Building for Culture:
*SAM Asian Art Museum
Renovations*

Seattle Arts and Lectures

Sustained Support,
Equipment

**Seattle Asian American
Film Festival** Sustained
Support

Seattle Center Foundation
Art Projects: *Fest I 2015*

**Seattle Chamber Music
Society** Sustained
Support

**Seattle Cherry Blossom and
Japanese Cultural Festival
Committee** Sustained
Support

***Seattle Children’s Chorus**
Sustained Support

Seattle Children’s Museum
Sustained Support

Seattle Children’s Theatre
Sustained Support, Building
for Culture: *Renovation of
SCT’s HVAC Systems*

**Seattle Chinatown
International District
Preservation and
Development Authority
(SCIDpda)** Sustained
Support

*First-time grant recipient

***Seattle Chinese Chorus**
Open 4Culture

***Seattle City Light,
Georgetown Steam Plant**
Building for Culture: *Historic
Concrete Restoration*

**Seattle Classic Guitar
Society** Sustained
Support

***Seattle Collaborative
Orchestra** Art Projects:
Listen to the Girls

Seattle Contemporary
Sustained Support

Seattle Festival Orchestra
Sustained Support

**Seattle Gdynia Sister City
Association** Art Projects: *23rd
Seattle Polish Film Festival*

**Seattle Genealogical
Society** Sustained
Support

**Seattle Gilbert and
Sullivan Society** Sustained
Support

Seattle Glee Clubs
Sustained Support

***Seattle Heritage
Emergency Response
Network (SHERN)**
Equipment

***Seattle Indian Health
Board** Art Projects: *Spirit of
Indigenous People’s Day*

***Seattle JazzED** Sustained
Support

Seattle Jewish Chorale
Sustained Support

Seattle Jewish Film Festival
Sustained Support

***Seattle Kokon Taiko** Art
Projects: *35th Anniversary
Concert and Workshop*

***Seattle Ladies Choir**
Sustained Support

Seattle Latino Film Festival
Art Projects: *7th Annual
Seattle Latino Film Festival*

Seattle Modern Orchestra
Sustained Support

Seattle Music Partners
Sustained Support,
Equipment

Seattle Musical Theatre

Sustained Support

Seattle Opera Sustained
Support, Equipment,
Building for Culture:
*Permanent Home for Seattle
Opera*

Seattle Peace Chorus
Sustained Support

**Seattle Philharmonic
Orchestra** Sustained
Support

Seattle Pro Musica
Sustained Support,
Equipment

Seattle Public Theater
Sustained Support

**Seattle Repertory Jazz
Orchestra** Sustained
Support

Seattle Repertory Theatre
Sustained Support,
Equipment, Building for
Culture: *PONCHO Forum
Renovation*

Seattle Scenic Studios
Sustained Support

Seattle Seachordsmen
Sustained Support

**Seattle Shakespeare
Company** Sustained
Support

**Seattle Symphony
Orchestra** Sustained
Support, Building for
Culture: *Soundbridge 2.0*

Seattle Theatre Group
Sustained Support,
Landmarks Capital:
*Paramount Theatre Masonry
Repairs*, Building for Culture:
*Seattle Theatre Group
Capital Priority Project 2015*

**Seattle True Independent
Film Festival** Sustained
Support

***Seattle Wind Symphony**
Sustained Support

**Seattle Women’s Jazz
Orchestra** Sustained
Support

**Seattle World Percussion
Society** Sustained
Support

**Seattle Youth Symphony
Orchestras** Sustained
Support

*First-time grant recipient



Red bag, © 2015 White River
Valley Museum.



Highline Historical Society collections used as a set for UFO film about Burien, © 2015, Nancy Salguero McKay.

***SeattleDances** Sustained Support

SecondStory Repertory Sustained Support

***Che Sehyun Art Projects:** *Grandma Project (HOPE)*

Seward Park Clay Studio Sustained Support

***Benson Shaw** Preservation Special Projects: *Ballard Street Name Mosaic Preservation Project*

Shoreline Historical Museum Sustained Support, Heritage Projects: *Commemoration of Traditional Duwamish Cranberry Place at Ronald Bog*, Building for Culture: *New Collections Facility and Research Center*

Shoreline-Lake Forest Park Arts Council Sustained Support

Short Run Sustained Support, Art Projects: *Short Run Comix and Arts Festival 2015 and 2016*

Shunpike Sustained Support

Si View Metropolitan Park District, Tollgate Farmhouse, North Bend Building for Culture: *Exterior Rehabilitation*

SIFF Sustained Support, Building for Culture: *Upgrades to the Uptown*

Simple Measures Sustained Support

SIS Productions Sustained Support

Sketchfest Sustained Support

Skykomish Historical Society Sustained Support

Skykomish Masonic Temple Building for Culture: *Roof Replacement*

***Skyway Solutions** Open 4Culture

Robert Smith, Auburn Carnegie Library Landmarks Capital: *Exterior Door Restoration*

Snoqualmie Valley Historical Society Sustained Support, Emergency, Collections Care, Heritage Projects: *Ada Hill: Continuing the Stories, SVHS*

SOIL Sustained Support

Ellen Sollod Historic Site Specific: *Lake Washington Palimpsest*

***Somali Family Safety Task Force** Open 4Culture

Sound Theatre Company Sustained Support

SouthEast Effective Development (SEED) Sustained Support, Equipment, Building for Culture: *Rainier Valley Radio / KVRU Studio Construction*

Southwest Seattle Historical Society Sustained Support, Collections Care, Preservation Special Projects: *Coming Home to the Homestead*

***Space.City** Sustained Support

***Coco Spadoni** Open 4Culture

Spectrum Dance Theater Sustained Support

SPokenword LAB SPLAB Art Projects: *Cascadia Innovative Poetry Panels*

Steamer Virginia V Foundation Sustained Support, Equipment, Building for Culture: *Reframing the Stern of the SS VIRGINIA V*

Stone Soup Theatre Sustained Support

*First-time grant recipient

Prototype for Lake to Sound Trail Kit of Parts, © 2015 Jenny Heishman and Kurt Kiefer.



Stroum Jewish Community Center Equipment

Studio East Training for the Performing Arts Sustained Support, Equipment

Sundiata African American Cultural Association Art Projects: *Festival Sundiata Black Arts Fest 2015*

Suyama Space Sustained Support

***TAF** Open 4Culture

Talented Youth Sustained Support

Taproot Theatre Company Sustained Support, Equipment

Tasveer Sustained Support, Art Projects: *10th Seattle South Asian Film Festival*

TeenTix (Seattle Center Foundation) Sustained Support

Ann Teplick Art Projects: *Snapped into Fractions*

***Thalia Symphony Orchestra** Sustained Support

Theater Schmeater Sustained Support

Theatre Battery Art Projects: *2015 Season — A MAZE*

Theatre Off Jackson Sustained Support

Theatre Puget Sound Sustained Support

TheFilmSchool Sustained Support

Thistle Theatre Sustained Support, Equipment

Three Dollar Bill Cinema Sustained Support

Tibetan Association of Washington Art Projects: *TibetFest 2015*

Tlaloktekuhtli Art Projects: *Dia De Los Muertos: Indigenous Cultural Renovation in South Park*

Tolt Historical Society Sustained Support

***Totem Star** Sustained Support

Town Hall Association Sustained Support, Building for Culture: *The Historic Restoration of Town Hall Seattle*

Town of Skykomish Building for Culture: *Skykomish Depot Rehabilitation*

***Linda Tsatsanis** Art Projects: *When Miles met Monteverdi*

Twelfth Night Productions Sustained Support

UMO Ensemble Sustained Support

Unexpected Productions Sustained Support

Unified Outreach Sustained Support

University Heights Center for the Community Association Sustained Support, Emergency, Equipment, Building for

Culture: *Performance Hall Restoration*

Upper Bear Creek Community Council Art Projects: *Music in the Park at Cottage Lake*

Urban ArtWorks Sustained Support

UW Meany Hall for the Performing Arts Sustained Support

UW Press Heritage Projects: *Classical Seattle, by Melinda Bargreen***VALA Eastside** Sustained Support

Valse Cafe Orchestra and Company Sustained Support

***VanFest** Open 4Culture

Vashon Allied Arts Sustained Support, Building for Culture: *Vashon Center for the Arts*

Vashon Opera Sustained Support

*First-time grant recipient



Robert Hardgrave, *Oxbow*, 2014.
Photocopy collage and toner
transfer on paper. King County
Public Art Collection.

Naomi Wachira,
© 2015 Jason Tang.



**Vashon Park District,
Point Robinson Light
Station** Landmarks Capital:
*Downspout and Window
Repairs*

**Vashon-Maury Island
Heritage Association**
Sustained Support, StEPs
4Culture Capacity Building
Grant, Building for Culture:
*Foundation Replacement
and Seismic Mitigation*

Vedic Cultural Center Art
Projects: *Ananda Mela 2015:
Joyful Festival of India*

***Vela Luka Cultural
Productions** Art Projects:
*31st Annual July 4th
Naturalization Ceremony*

Velocity Dance Center
Sustained Support, Building
for Culture: *Studio/Theater
Health and Safety Upgrades,
plus Improved Box Office*

Vera Project Sustained
Support

Village Theatre Sustained
Support, Building for
Culture: *Village Theatre's
New Production Warehouse*

Rosa Vissers Art Projects:
Anatomy of an Accident

Voice of Vashon Equipment,
Building for Culture:
*Community Access
Storefront Studio*

Wa Sang Foundation, Rex

Apartment Building, Seattle
Landmarks Capital: *Roof
Replacement*, Building for
Culture: *Comprehensive
Exterior Rehabilitation*

**Cynthia Walker, North Bend
Theatre** Landmarks Capital:
Front Door Replacement

Leah Warshawski Art
Projects: *BIG SONIA
Documentary*

**Washington Alliance for
Arts Education** Sustained
Support

**Washington Ensemble
Theatre** Sustained
Support

Washington Lawyers

for the Arts Sustained
Support

**Washington Museum
Association** Community
Partner

**Washington State Arts
Alliance** Community Partner

**Washington State Arts
Commission** Community
Partner

**Washington State Jewish
Historical Society** Sustained
Support, Collections Care,
Heritage Projects: *Passport
to Washington*, Building for
Culture: *Exhibit Gallery*

**Washington State Jewish
Historical Society** StEPs

*First-time grant recipient

4Culture Capacity Building
Grant

***Washington State Labor
Council** Building for Culture:
*Jackson Street Workers'
Mural*

**Washington Trust for
Historic Preservation**
Sustained Support,
Preservation Special
Projects: *Youth Heritage
Project (YHP) SWOT Team*,
Building for Culture:
*Stimson-Green Mansion
Building & Site Preservation*

**West Hill Community
Association** Sustained
Support

**West Seattle Community
Orchestra** Sustained
Support

Whim W'Him Sustained
Support

**White Center Community
Development Association**

Art Projects: *Immigrant
Integration through Visual
Storytelling*

White River Valley Museum
Sustained Support, Art
Projects: *SERVICE INK*,
*Veterans' Tattoos and Their
Stories*, Collections Care,
Heritage Projects: *In The
Bag, the History of Women's
Purses and Their Contents*,
Building for Culture:
*Renovating a Community
Museum to Enhance Interest
and Accessibility*

***Nancy Whitlock** Art
Projects: *Light & Dark – A
to Z*

David B. Williams Art
Projects: *Street-Smart Walks:
Exploring Seattle's Natural
and Human History*

**Wing Luke Museum of the
Asian Pacific American
Experience** Sustained

Support, Equipment,
Collections Care, Heritage
Projects: *Khmer American
Community Project*, Building
for Culture: *Storage System*,
*Safekeeping The Wing's
Collections*

Wintergrass Music Festival
Sustained Support

***Inye Wokoma** Heritage
Projects: *A Life in Green and
Black*

**Women's University Club of
Seattle Foundation** Building
for Culture: *Restoration
of Original Windows in
Clubhouse*

**Woodinville Heritage
Society** Sustained
Support

**Woodinville Repertory
Theatre** Sustained
Support

World Kulturz Art Projects:
Welcome to Our Native

*Land Powwow and Coastal
Cultures Celebration*

***Robert S Yerkes** Building
for Culture: *McClellan
Building Interior and Facade
Restoration and Roof
Replacement*

YMCA of Greater Seattle
Art Projects: *Community
and Diversity: A Teen Art
Installment Project*

**Young Shakespeare
Workshop** Sustained
Support, Equipment

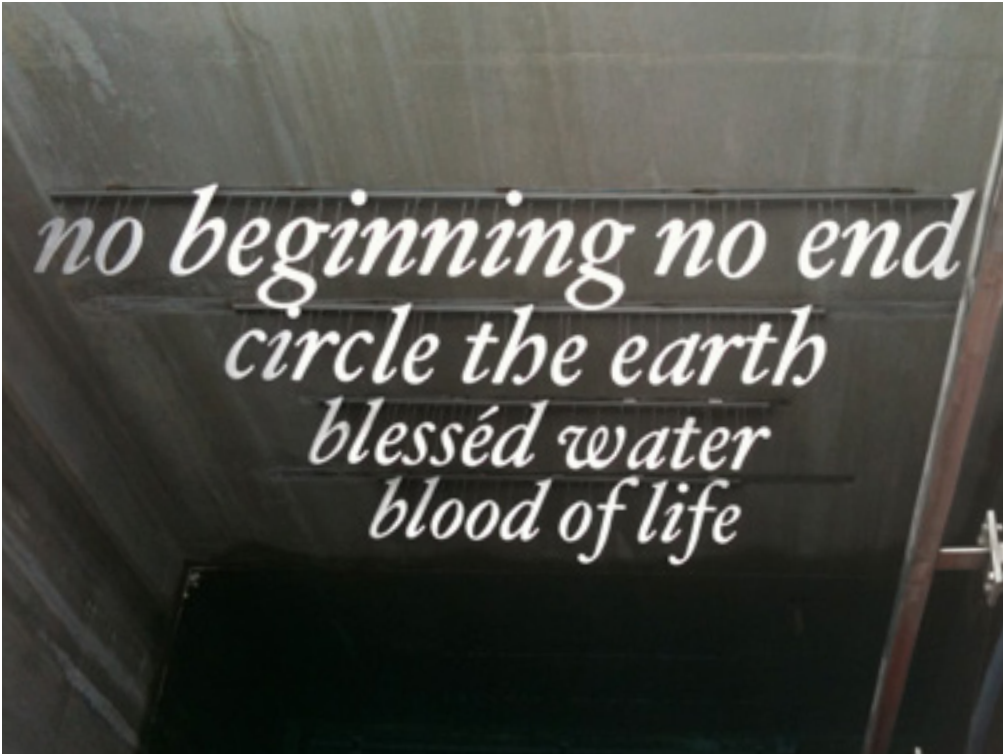
Youth Theatre Northwest
Sustained Support

***Ben Zamora** Art Projects:
MANDALA

zoe/juniper Sustained
Support

Jennifer Zwick Art Projects:
Gallery4Culture solo show

*First-time grant recipient



Jane Tsong, ...no beginning
no end/circle the earth/
blessed water/blood of life...
(detail), © 2011 stainless steel,
audio.

Urvasi Dance
© 2013 Survo Datta



Public Art: Artists,
Partners, and
Fabricators

2312 Gallery
Aaron Counts
Africatown Center for
Education & Innovation
Al Price
Aletheia Wittman
Andre Franklin
Arts Corps
B-Force Security
Benson Vess
Buster Simpson
Caedmon Cahill
Celeste Cooning
Claire Thornton
Claudia Fitch
Daemon Arrindell
Diana Falchuk
Diane Korf
Eli Hastings
Elizabeth Gahan
Gage Hamilton
Garfield Community Center
Jenny Heishman and Kurt

Kiefer
Jill Patnode
JoeAnne Taylor
Kate Sweeney
Katherine Hurley
Lara Davis
Leo S. Berk
Madrona Digital
Marcel Purnell
Marvin Oliver
Moshier Community Arts
Center
Nikkita Oliver
Omana Imani
Otieno Terry
ProGreen Landscaping
Revelry Media & Methods
Rich Lehl
Riot Creative Imaging
Robert Horner
Sans façon (Charles Blanc
and Tristan Surtees)
Sharon Williams
Shontina Vernon
Team Child
Timothy Aguero

Tina Hoggatt
Tory and Eroyn Franklin
Wesley Saint Clair
Youth Undoing Institutional
Racism

Touring Arts Roster

The Westerbork Serenade
Abráce
Eva AbramRainwater
Storytelling
The Acrobatic Conundrum
Adefua African Music &
Dance Company
ajusticenetwork/Splinter
Dance Company
Alchymeia
Cynthia Alexander
Alleyoop
Alma Villegas y Azucar
Mario Amaya
Ambience Jazz Quartet
Amontaine Aurore
Barbie Anaka
Kofi Anang

Ancient Sounds
Anzanga Marimba Ensemble
Apex Aerial Arts
Aunt Dottie’s Sing-Along
Cabaret
Bailadores de Bronce
Matt Baker
Suntonio Bandanaz
The Barrelhouse Jive Cats
Christa Bell
Maggie Bennett
Billet-Deux
Billy Ray Band
Black Stax
The Bobs
Bonnie Birch
Book-It
Bottom Line Duo
The Cabiri
Rose Cano-North-South
Conexions
Julie Cascioppo
Debbie Cavitt
Chamber Opera Northwest
Choroloco
CocoLoco

Concert Imaginaire
Meredith Connie
Cordaviva
Cornucopia Concert Band
Correo Aereo
Crumac
Cuadro Azahares
Ann Cummings
Cyrus Khambatta Dance
Company
Daana Quartet
DE CAJcN Project
The Debaucherautes
Debi Cahtterjee Duo
Del Rey
Dos Guitarras
Due Belle Voci
Dunava
Duo En
Duo Finelli
Geisa Dutra
The Elnah Jordan
Experience
Emerald City Jug Band
EntreMundos Quarteto
Helene Eriksen

The Esoterics
Andre Feriante
Fisher Ensemble
Flamenco Gitana
Franchesska Berry and Som
La Bi Joli
Fred Hoadley Trio
From Within Nucleus
Gansango Dance Company
Hagucha Garinagu
Reggie Garrett & the
Snakeoil Peddlers
Global Heat
Global Village
Reginald Goings Good Co
Hammill-Davis Duo
Hammon Esvelt Quintet
Gin Hammond/Returning
the Bones
Ed Hartman
Henry Cooper Band
Lou Henry Hoover
Mark Hilliard Wilson
Hopscotch
Neil Hubbard
Ben Hunter & Joe Seamons

Srivani Jade
Jangles
Jet City Improv/Wing-it
Productions
Joy Mills Band
Juliana & PAVA
Karin Kajita
Jonathan Kingham & Ryan
Shea Smith
Kings of Swing
JaWaan LaRue
Lelavision
Cheryse Lewis
Little Sara and the
NightOwls
Living Voices
The Lonely Coast
Longstride
Mambo Cadillac
MariAnna Trio
Mariide
Mark Whitman Band
Mary Wiles Show
Greta Matassa
Leslie McMichael
Eduardo Mendonca and

Show Brazil!
Message From Guinea
Mighty Tiny Band
Miho & Diego Duo
Mikey Mike The Rad Scientist
Miss Rose & Her Rhythm
Percolators
Kibibi Monie
Eva Moon
Mary Margaret Moore
Quinton Morris
Nadira
New Age Flamenco
Mercedes Nicole
Michael Nicolella
Northwest Tap Connection
Old Dogs New Tricks
One World Taiko
Orchestra Zarabanda
Jim Page
Michael Partington
Susan Pascal
Pickled Okra
Angelo Pizarro Pizarro
Playworks
Pony Boy All-Star Big Band



Seattle Women’s Steel Pan Project, © 2014 Christopher Nelson.

- | | | | |
|----------------------------|----------------------------|---------------------------|-------------------|
| Rat City Brass | Pan Project | The Tarentellas | Sarah Bloom |
| Recess Monkey | Selam Band | Te Fare O Tamatoa | Easton Branam |
| Reptet | Aaron J. Shay | Theater Simple | Tina Callanan |
| Rick Hartman the Toy Maker | Mary Sherhart & Balkan | Thione Diop Yeke Yeke | Kim Camara |
| Rick May | All-Stars | Thistle Theatre | Nancy Clendaniel |
| Rodger Pegues | Shumba Youth Marimba | Stokley Towles | Caitlin Cordell |
| Arturo Rodriguez | Ensemble | Awilda Verdejo | Monet Curnutt |
| Roger Fernandes | Smilin’ Scandinavians | Brian Vogan | Rebeca Dawn |
| The Rootsters | Matt Smith | Naomi Wachira | Ella Dorband |
| Leslie Rosen Pyrosutra | SMQ | Paul “Che oke ten” | Jeremy Ehrlich |
| Rouge | Maya Soleil | Wagner | Hannah Frelot |
| Ruze Dalmatinke Orchestra | Sonando | Judd Wasserman | Lynne Handlos |
| Ruzivo | The Sound of the Northwest | Storme Webber | Naghma Husain |
| Sabura | Soyaya | James Whetzel | Laura Hutchinson |
| George Sadak | Thaddeus Spae | Charlie Williams | Sibyl James |
| Salt Horse | Stanislove | Sharon Nyree Williams | Chris Jeffries |
| Sapience Dance Collective | Steve Griggs’ Panama | Greg Williamson Quartet | Andy Jensen |
| Savani World Jazz | Hotel Jazz | Willrich Darrius Willrich | Olivia Johnson |
| Savannah Fuentes | Stone Soup Theatre | Maritess Zurbano | Ann Kendall |
| Flamenco | Supersones | | Kelsey Larson |
| Seattle Shakespeare | Suzanna & Friends | | Zhenya Lavy |
| Company | Christian Swenson | | Dan Mayer |
| The Seattle Women’s Steel | Taproot Theatre Company | | Rachael McAlister |

On-Site Reviewers

Chase Anderson
Rachel Atkins



Poetry on Buses station, ©2015 Timothy Aguero Photography.

- | | |
|--------------------|-------------------|
| Georgia McDade | Genie Sheth |
| Sally McDonough | Allison Shirk |
| Adina Menashe | Michiko Tanaka |
| Tracy Montes | Obadiah Terry |
| Erika Nelsen | Courtney Theis |
| Lola Peters | Jennifer Vierling |
| Kendra Potoshnik | Cynthia White |
| Nancy Pringle | Barbara Winkelman |
| Jessica Rubenacker | |
| Mary Sherhart | |

Financials

\$47,934,325 total funding requested

\$30,228,138 total funding awarded

REVENUES	Actuals 2015	2014	2013
Lodging Tax Revenue (1)	\$21,916,753*	\$ —	\$1,784,564
King County Public Art Revenue	2,517,831	790,922	1,380,380
King County Appropriations	—	820,000	70,000
Public Art Consulting Revenue	53,766	31,345	56,566
Investment Earnings (Loss)	179,687	304,594	(398,005)
Miscellaneous Other	140,682	51,115	68,640
TOTAL REVENUES (2)	\$24,808,879	\$1,997,976	\$2,962,145

EXPENDITURES & OTHER USES	Actuals 2015	2014	2013
Arts & Heritage Grant Programs	\$6,554,804	\$6,476,411	\$6,655,287
Public Art Projects	874,337	1,477,414	1,490,042
Debt Service (3)	—	820,000	70,000
Management & General Supporting Services	516,428	564,214	518,296
TOTAL EXPENDITURES & OTHER USES (2)	\$24,808,879	\$1,997,976	\$2,962,145

FUND BALANCES	Actuals December 31, 2015	December 31, 2014	December 31, 2013
General Fund	\$1,755,306	\$1,699,955	\$1,144,658
Lodging Tax Special Revenue Fund	5,179,884	4,239,757	4,002,558
1% for Art Special Revenue Fund	4,602,526	2,931,340	3,764,257
Cultural Special Account Fund	52,069,439	38,052,694	44,785,861
TOTAL FUND BALANCES	\$63,607,155	\$46,923,746	\$53,697,334

NOTE: 2015 financial information is based on unaudited fund financial statements. Requests for the most recent complete audited financial report should be addressed to 4Culture’s finance department at 4Culture, 101 Prefontaine Place S, Seattle, WA 98104.

(1) Current legislation temporarily discontinues the use of lodging tax receipts for cultural purposes in King County until 2021 except for \$3 million in deferred King County lodging tax receipts expected to be received in 2016. The Cultural Special Account is the designated source of funds for arts and heritage grant programs during 2016-2020. *Figure represents one-time revenue from the early retirement of the King Dome bond.

(2) Total revenues and expenditures differ on an annual basis due to timing factors in the inflows and outflows of the various programs’ financial resources

(3) Required payments to King County for principal and interest on County debt issued for arts and heritage cultural facilities grants prior to the creation of 4Culture.



“When 4Culture checks arrive we all get happy.
I love the broad distribution of support for our
community—and being a part of that.”

Julie Stein, Burke Museum