

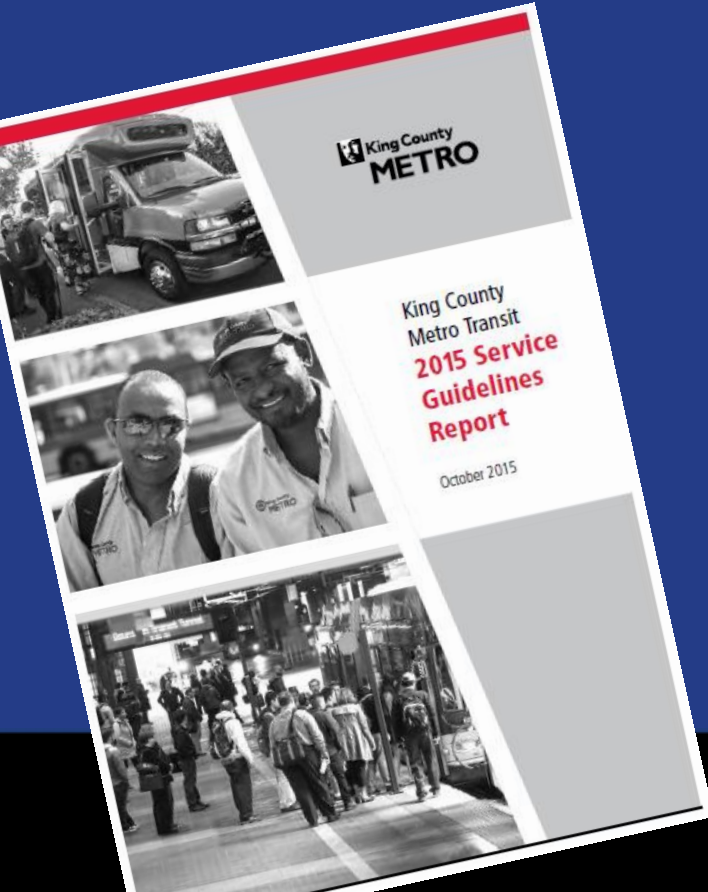
# 2015 Service Guidelines Report

---

Regional Transit Committee

November 18, 2015

# 5<sup>th</sup> Annual Service Guidelines Report



The service guidelines define a transparent process using objective data that helps Metro make decisions about adding, reducing, and changing transit service to deliver productive, high quality service where it's needed most.

# Service changes and report timeline

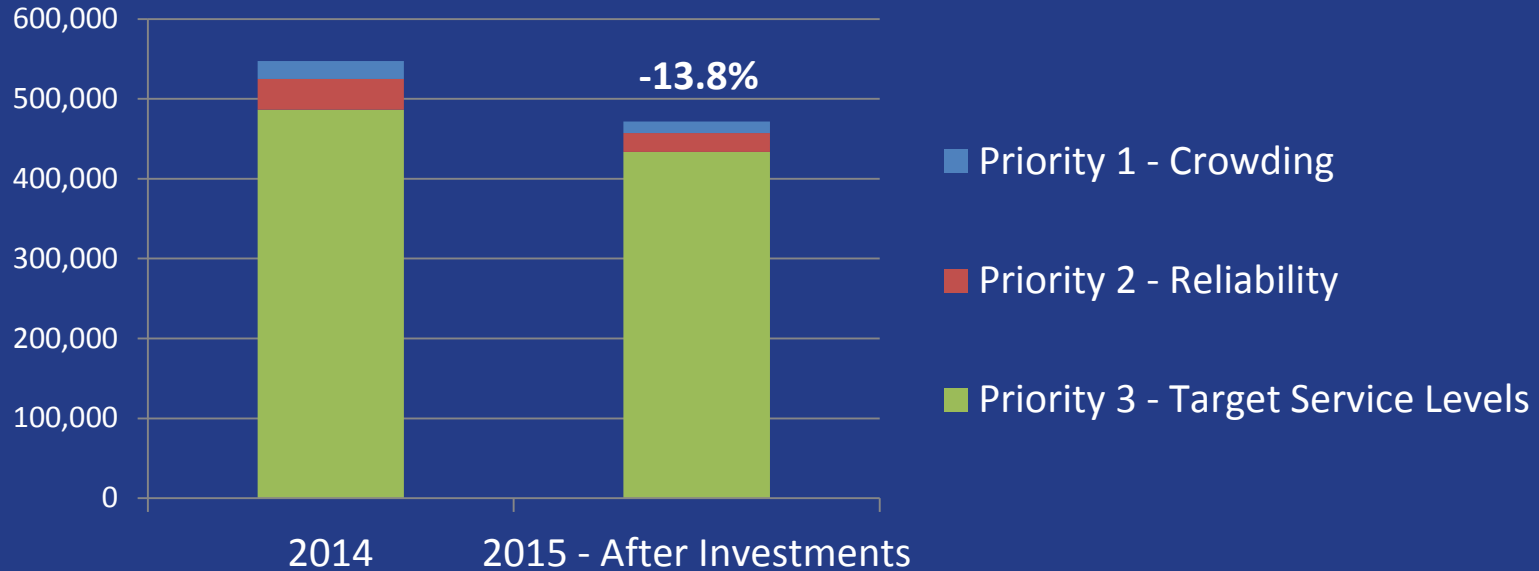
- Data for this report came from March-June 2015:
  - **after** the September 2014 reductions
  - **before** the June and September 2015 investments
- Investment need shown in the report reflects need **after** subtracting:
  - September and June 2015 investments
  - Planned investments for March 2016

# System growth of 14% is needed

Priority	Investment Purpose	2014 Estimated Need	2015 Estimated Need
1	Reduce passenger crowding	22,200	14,400
2	Improve schedule reliability	38,650	23,550
3	Meet target service levels	486,500	433,700
Total		510,700	471,650

2015 estimated needs reflect investments made in June and September 2015 and those planned for March 2016

# Change in investment need



# Change in productivity\*



Rides/platform hour



Passenger miles/platform mile

	2014	2015
Seattle Core	40.6	42.3
Non-Seattle Core	24.3	25.1
<b>Systemwide</b>	<b>35.7</b>	<b>37.3</b>

	2014	2015
Seattle Core	14.5	15.2
Non-Seattle Core	7.3	7.5
<b>Systemwide</b>	<b>12.1</b>	<b>12.7</b>

\* Source: Spring 2014 and Spring 2015 service change data, annualized

# Seattle Community Mobility Contract

- 220,000-hour investment in 2015 covers 62 routes
  - addressed all priority 1 and 2 needs identified in 2014 report
  - restored service on three routes
  - implemented parts of Seattle's Transit Master Plan
- Partnership agreement allows for further investment
  - Metro and Seattle jointly investing in 13 routes

# Alternative Services

- Ongoing projects in:
  - Southeast King County
  - Redmond real-time rideshare (iCarpool pilot)
  - Duvall
  - Vashon Island
- Beginning outreach for:
  - Communities affected by September 2014 reductions
  - Complementary projects (enhancing existing service with alternative services)

Route	Service	Launch Date
628	Community shuttle: North Bend, Snoqualmie, Issaquah Highlands	Feb 2015
629	Snoqualmie Valley Shuttle	Fall 2013
630	Mercer Island Shuttle	June 2015
631	Burien community shuttle	June 2015