
Conveyance System Improvement Program Update

Initial Regional Needs Assessment Results for Discussion with Local Agencies

September 2014



Contents

Introduction.....	4
Conveyance System Improvement (CSI) Planning Areas	5
Initial Regional Needs Assessment Summary – Map.....	6
Hidden Lake Planning Area.....	7
NW Lake Washington Planning Area.....	8
North Lake Washington Planning Area.....	9
NE Lake Washington Planning Area.....	10
SE Lake Washington Planning Area.....	11
South Lake Washington Planning Area.....	12
North Lake Sammamish Planning Area	13
South Lake Sammamish Planning Area	14
North Green River Planning Area.....	15
South Green River/Kent Planning Area.....	16
South Green River/Soos Planning Area.....	17
South Green River/Auburn Planning Area	18

Introduction

In accordance with the Regional Wastewater Services Plan (RWSP) policies (King County Code Chapter 28.86), King County's Wastewater Treatment Division (WTD) is carrying out an update to the Conveyance System Improvement (CSI) Program. The CSI Program identifies conveyance improvements to ensure there is sufficient capacity in the separated conveyance system to meet projected demands and the RWSP 20-year peak flow design standard. The design standard was approved by the King County Council in 1999 as part of the RWSP. In adopting this conservative standard, the County Executive and County Council recognized that it would take some time for the conveyance system to be upgraded to meet the standard.

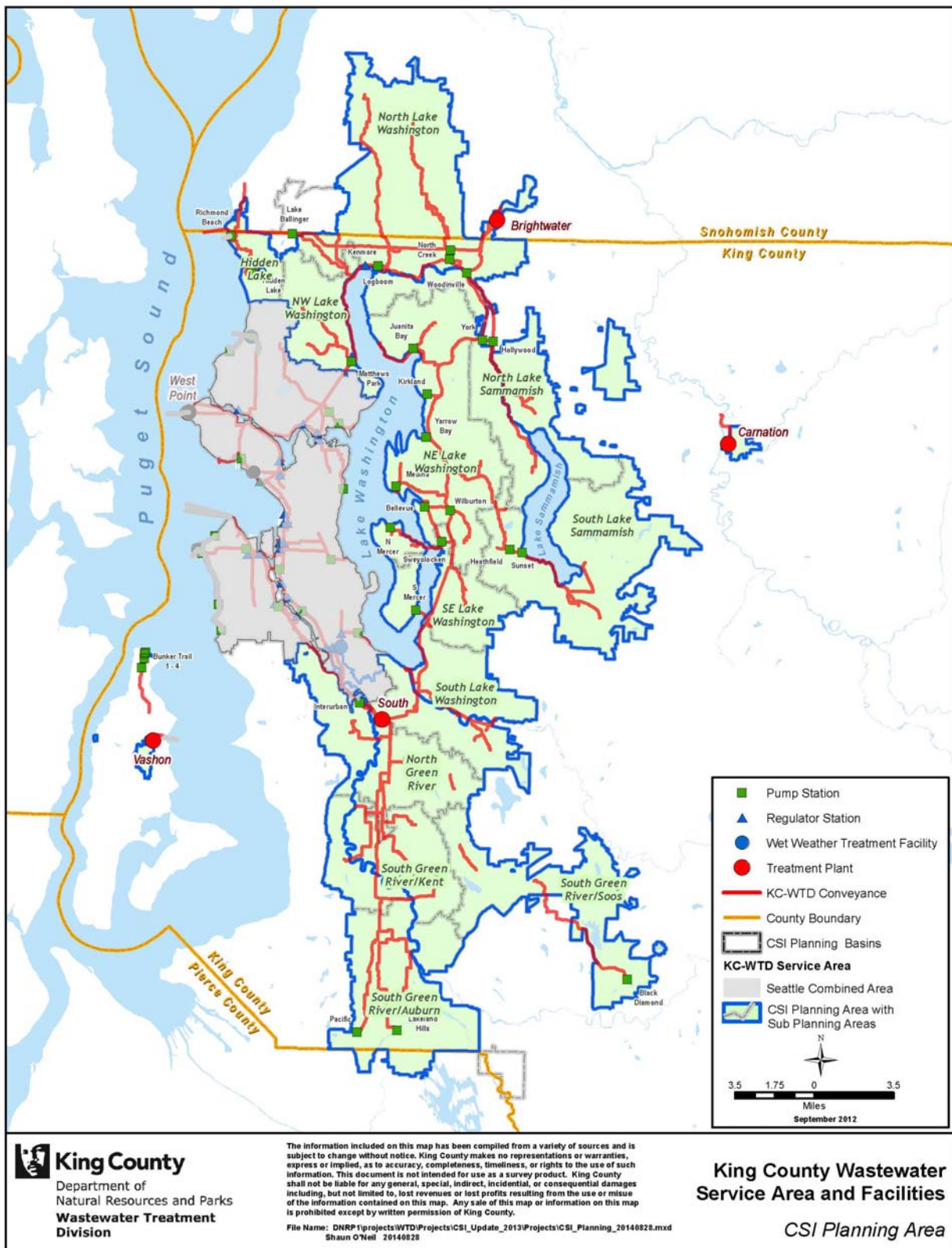
WTD works closely with the Engineering and Planning Subcommittee of the Metropolitan Water Pollution Abatement Advisory Committee and individual local agencies in the process to update the CSI Program. The last update was completed in 2007 and is available at: <http://www.kingcounty.gov/environment/wastewater/CSI.aspx> . The current update is expected to be complete in 2016.

This document summarizes the initial results of assessing the capacity of the separated portion of the regional wastewater conveyance system through 2060. The assessment used a variety of data sources including WTD's decennial flow monitoring data collected between 2009 and 2011 and the 2013 Puget Sound Regional Council Population and Employment forecast to determine future conveyance needs.

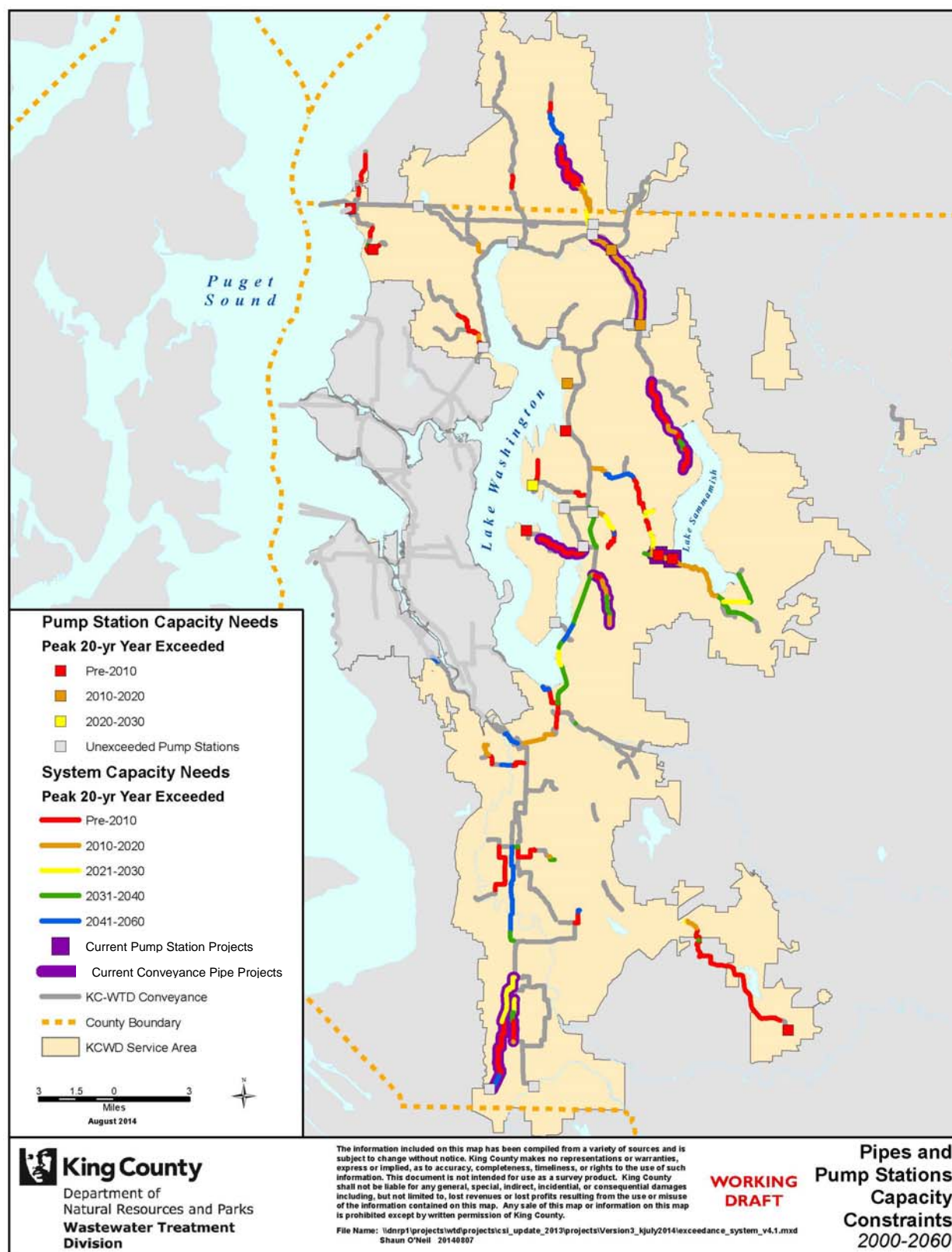
WTD will be meeting with the local agencies to discuss these initial results and further refine regional growth and capacity projections as needed. This document includes a map of each CSI Planning Area with initial identified conveyance system needs. CSI planning areas are 12 sub-regional basins used to organize data and analyses of the separated conveyance system.

If you have comments or questions about the initial identified conveyance system needs please contact the CSI Program Project Manager Steve Tolzman at 206.477.5459 or steve.tolzman@kingcounty.gov .

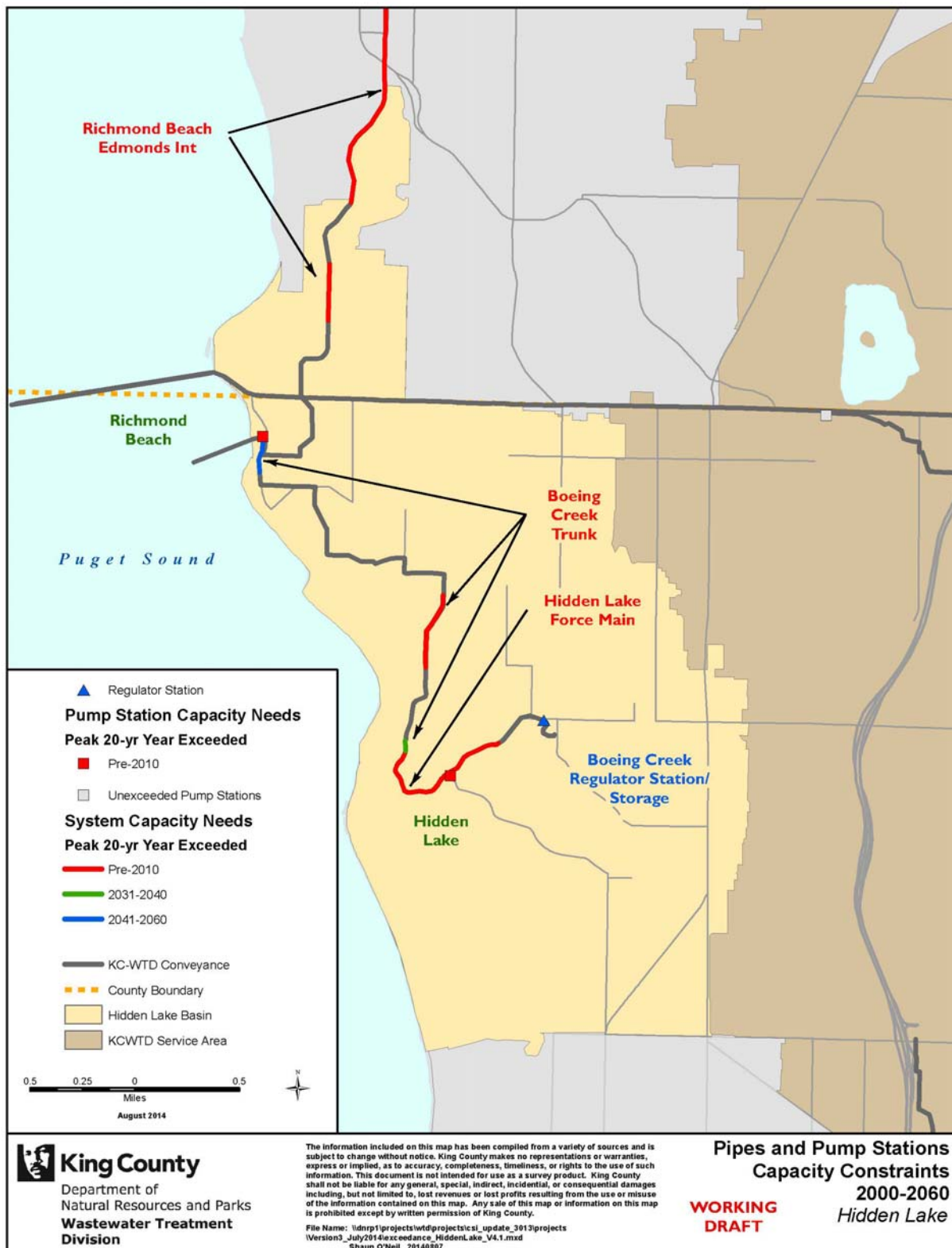
Conveyance System Improvement (CSI) Planning Areas



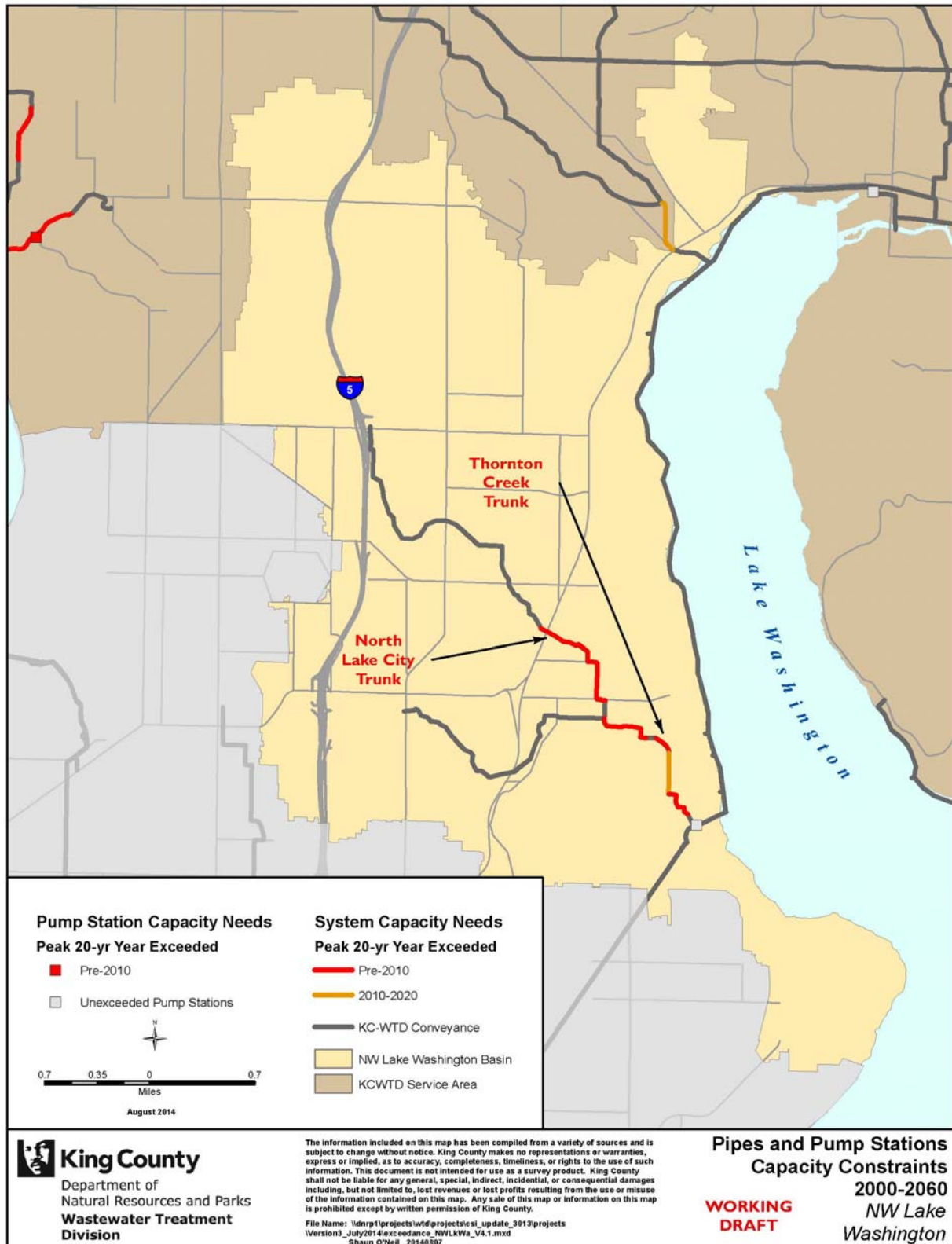
Initial Regional Needs Assessment Summary – Map



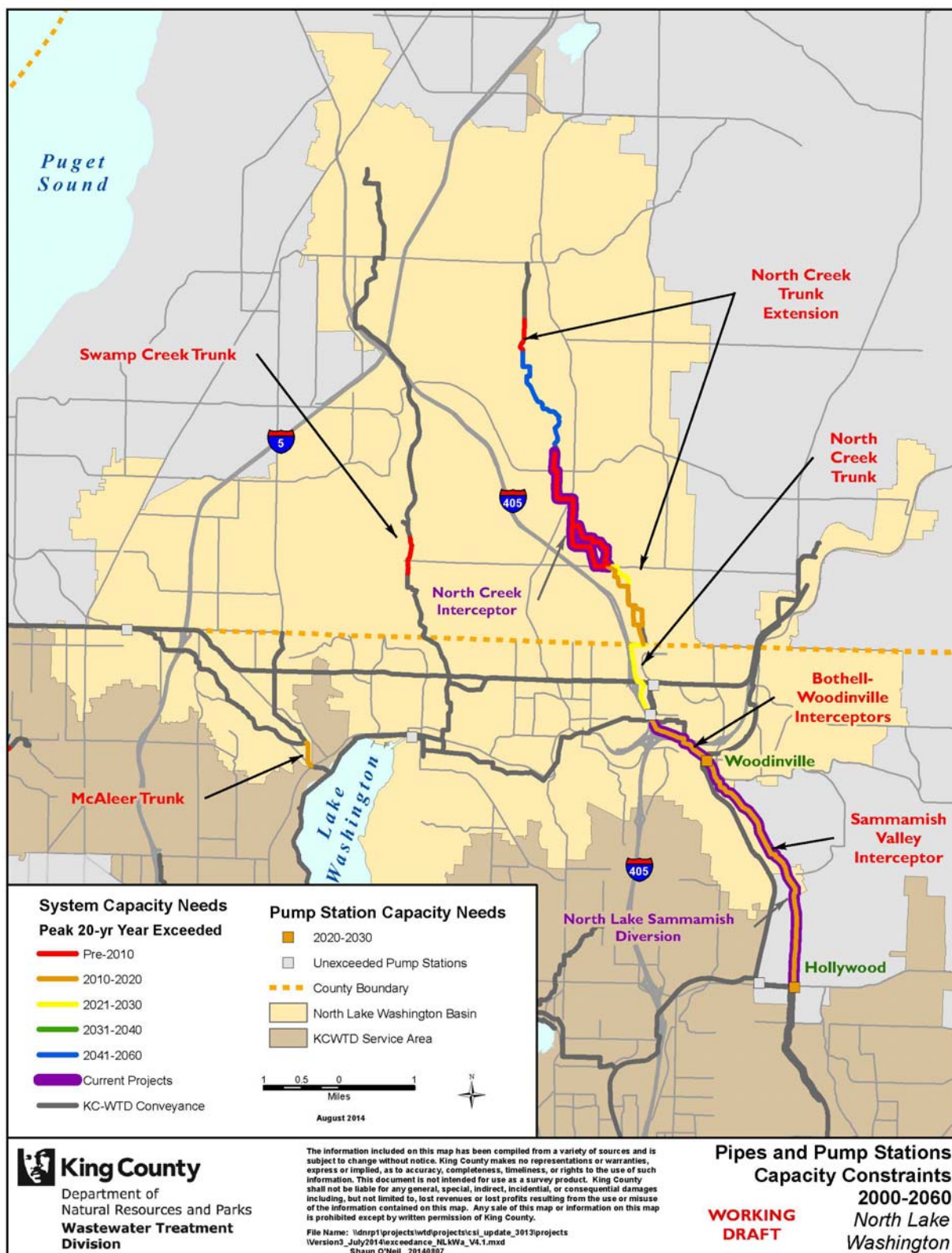
Hidden Lake Planning Area



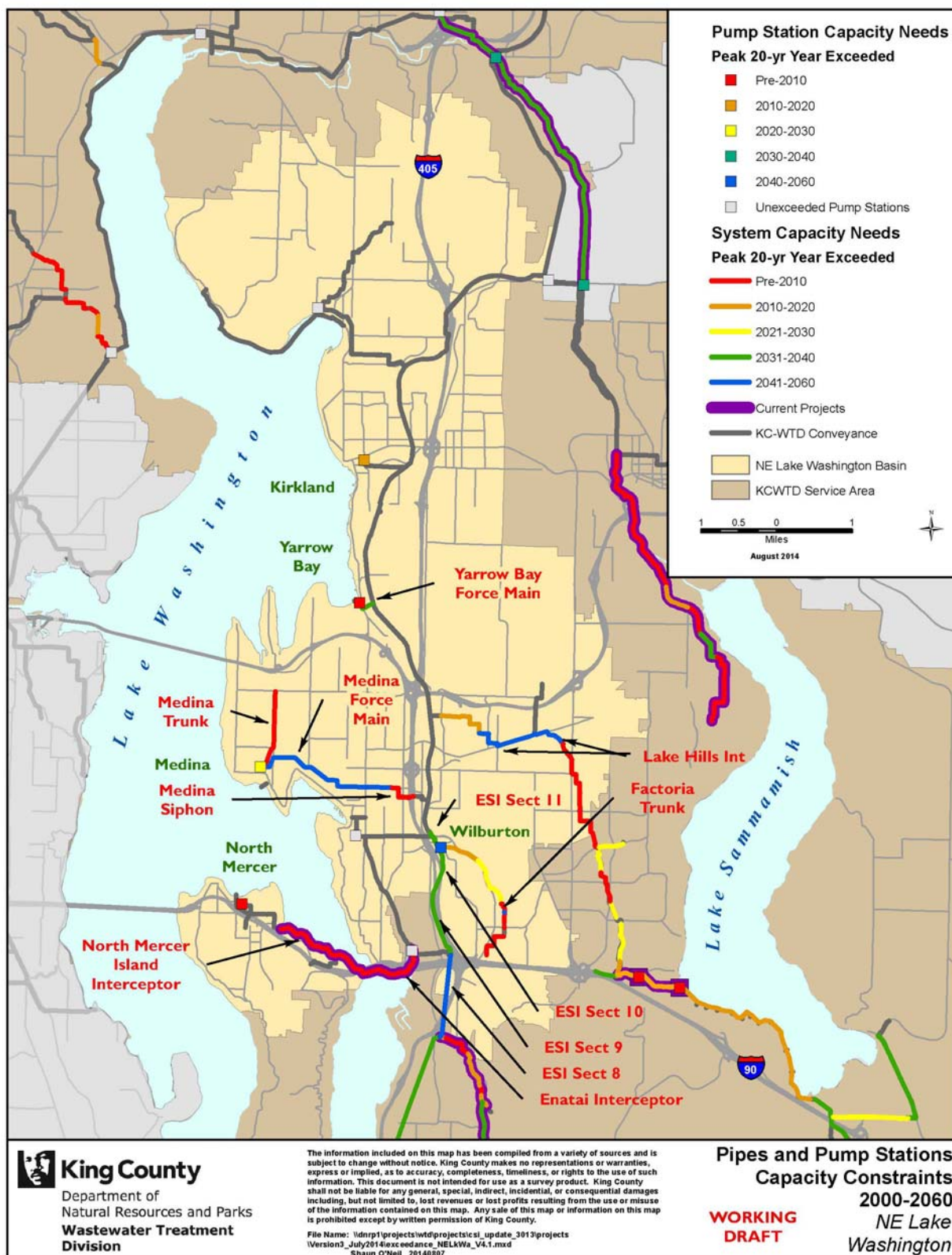
NW Lake Washington Planning Area



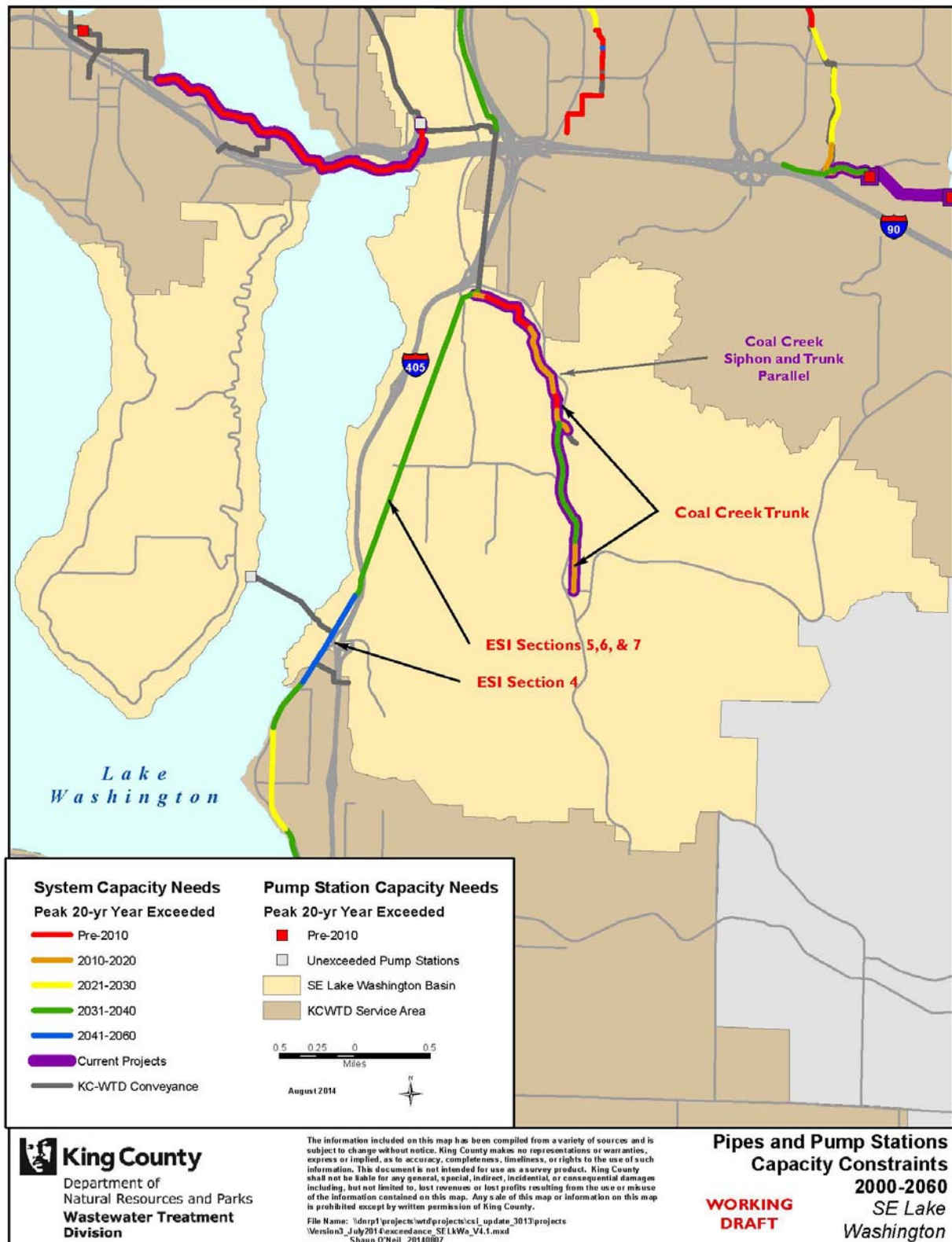
North Lake Washington Planning Area



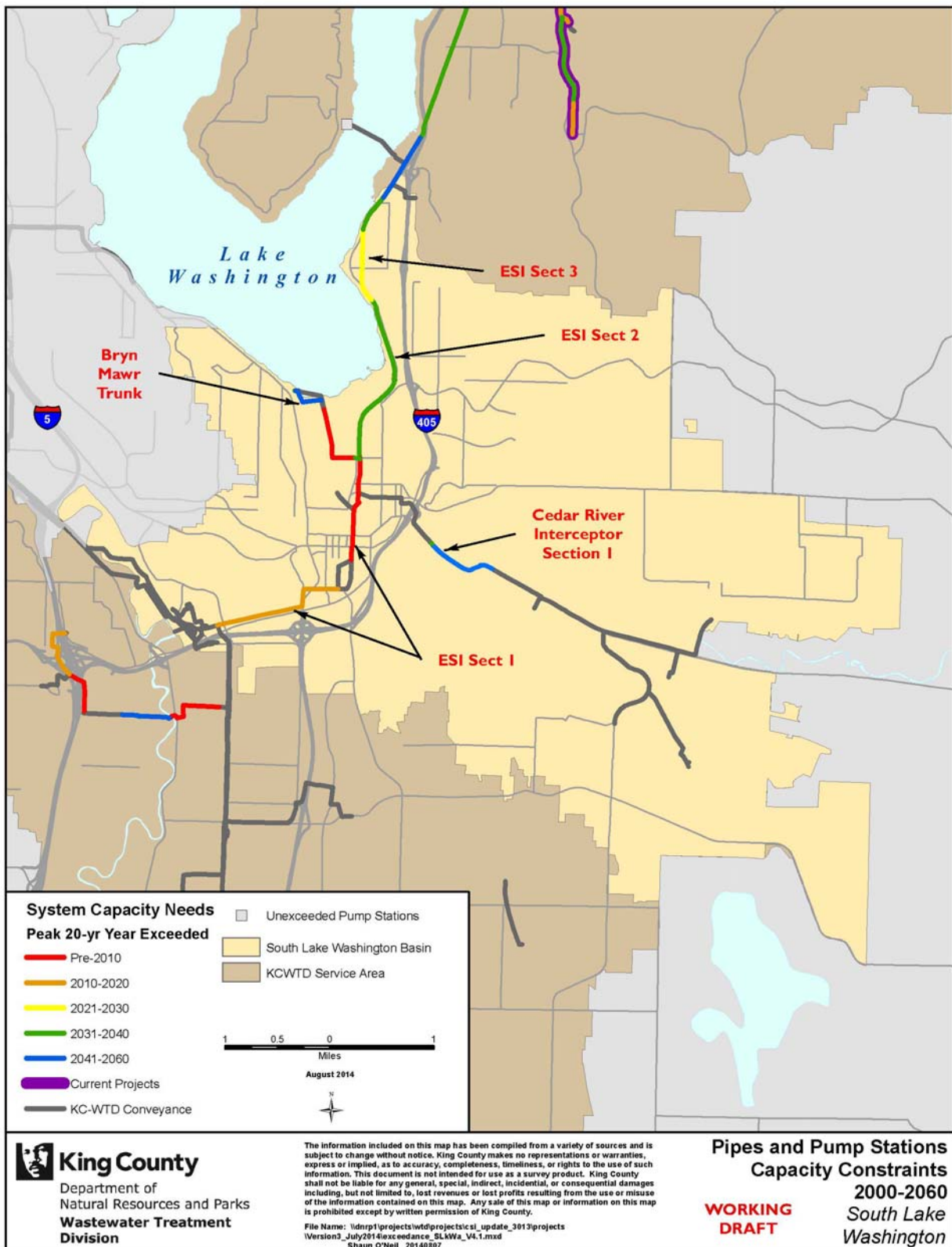
NE Lake Washington Planning Area



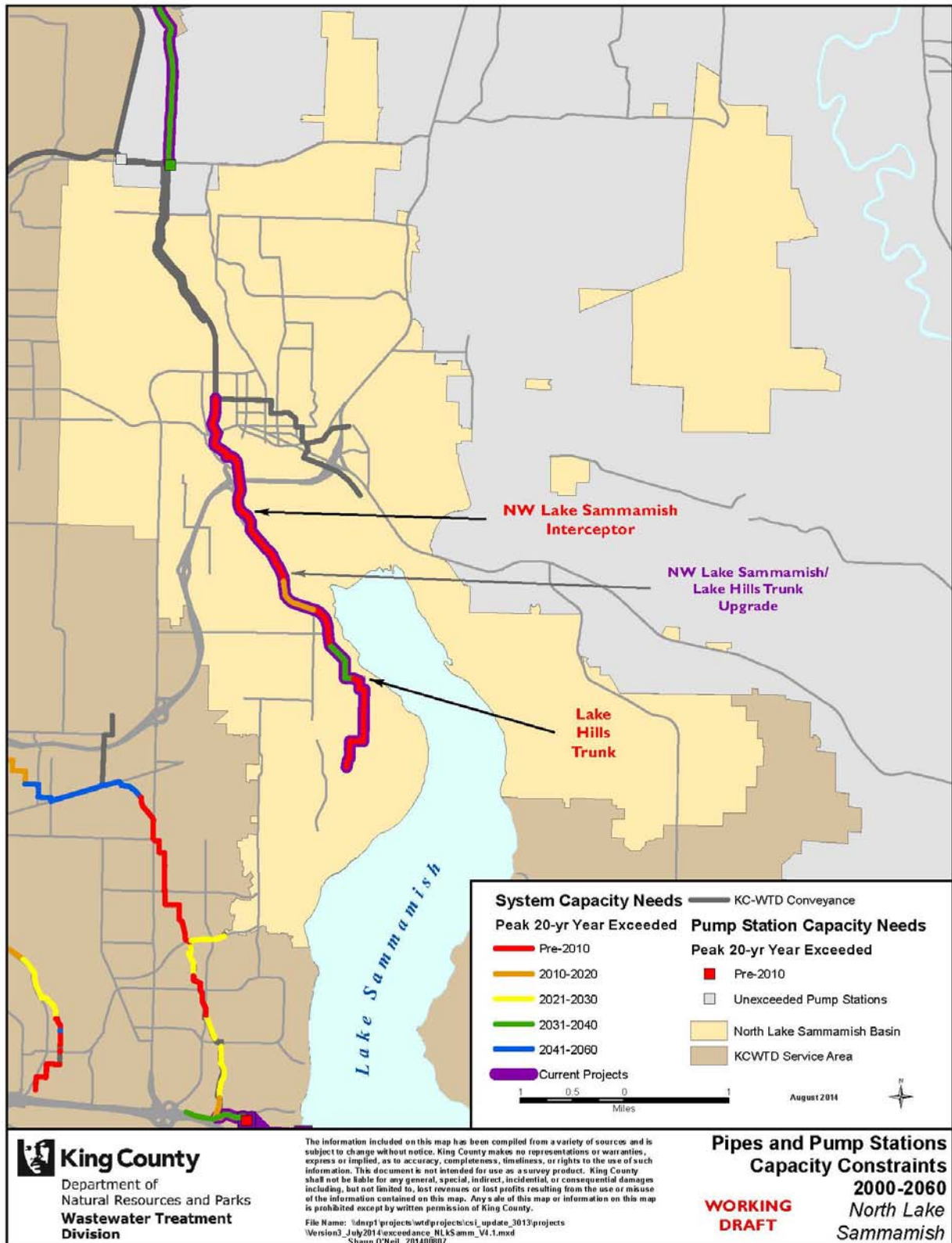
SE Lake Washington Planning Area



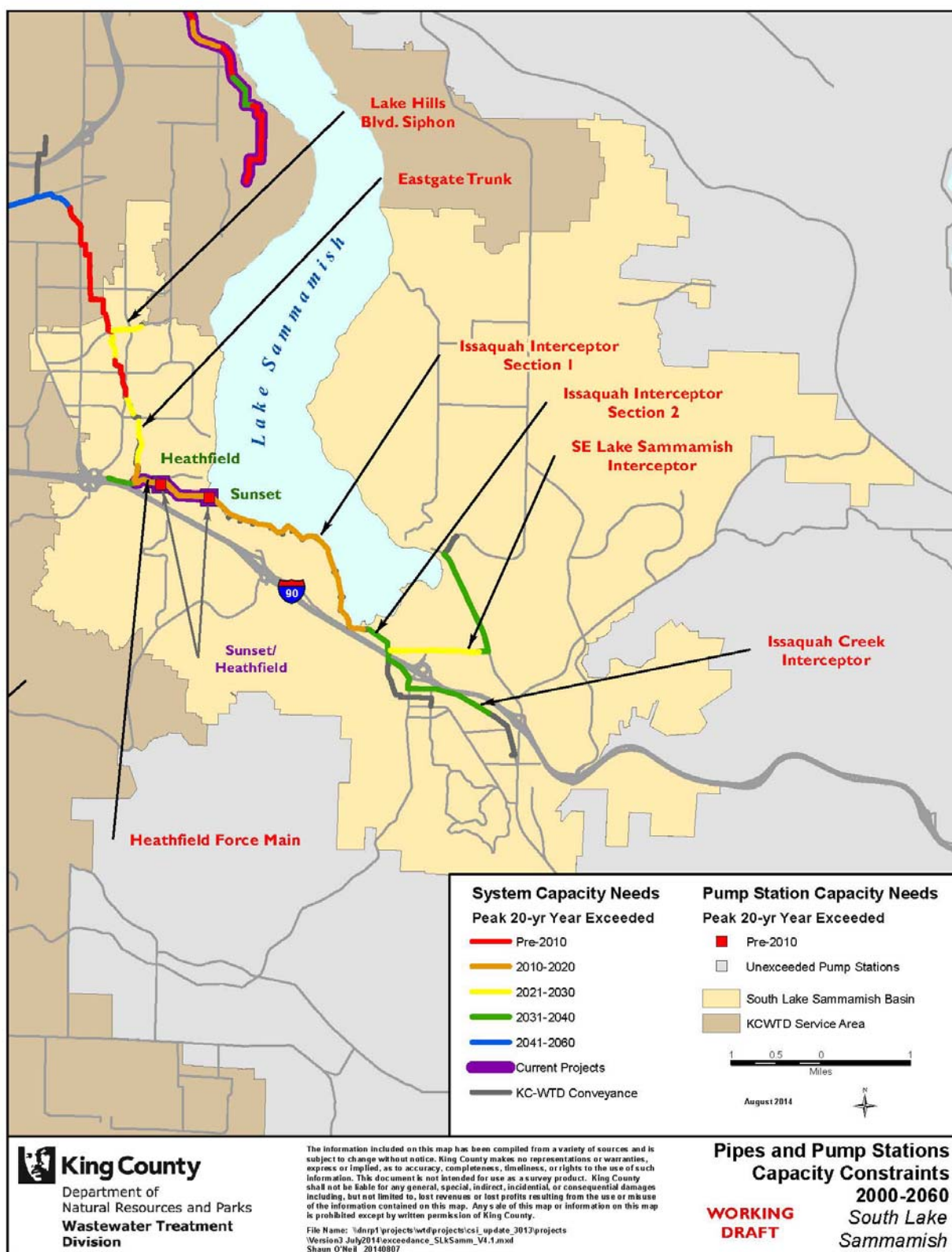
South Lake Washington Planning Area



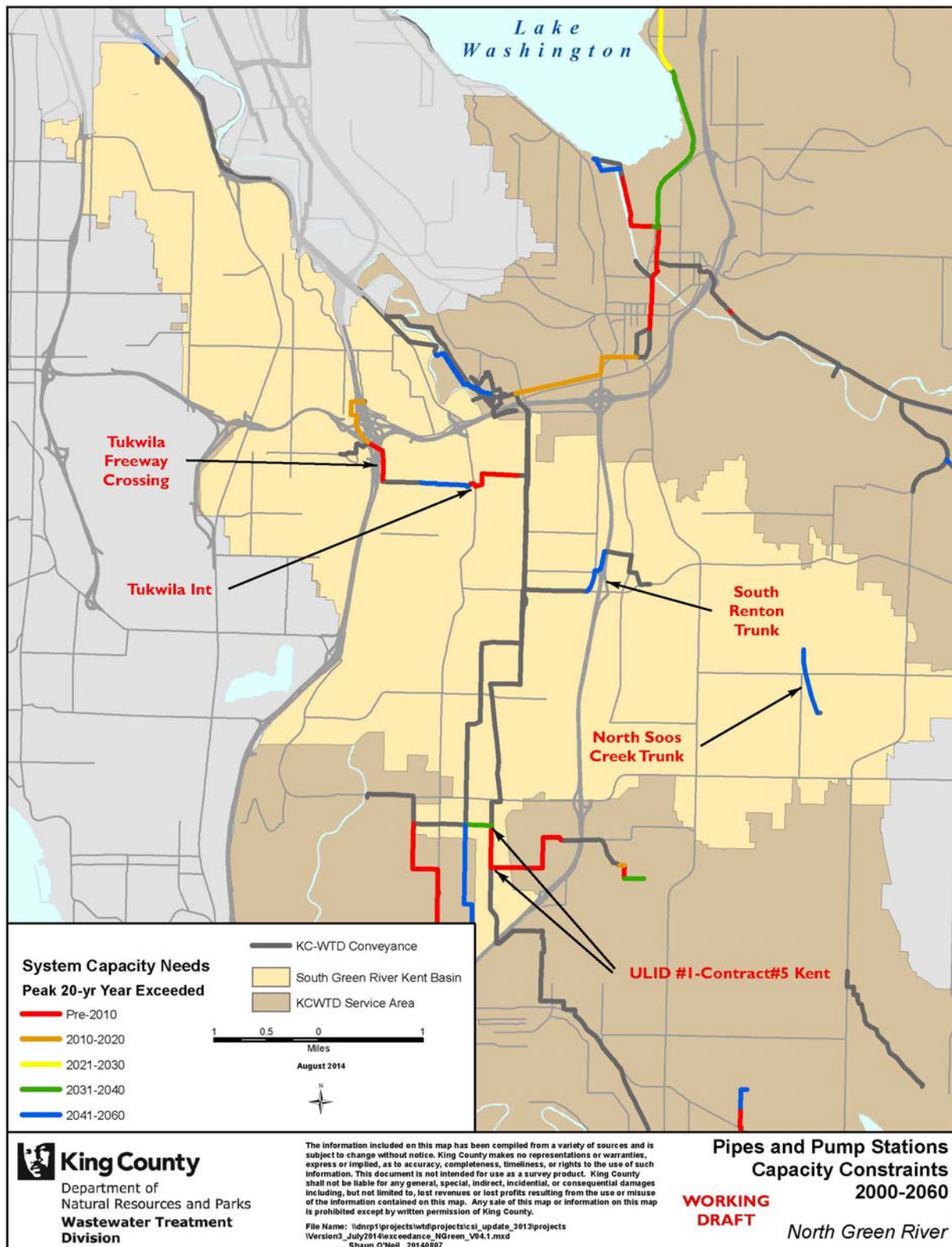
North Lake Sammamish Planning Area



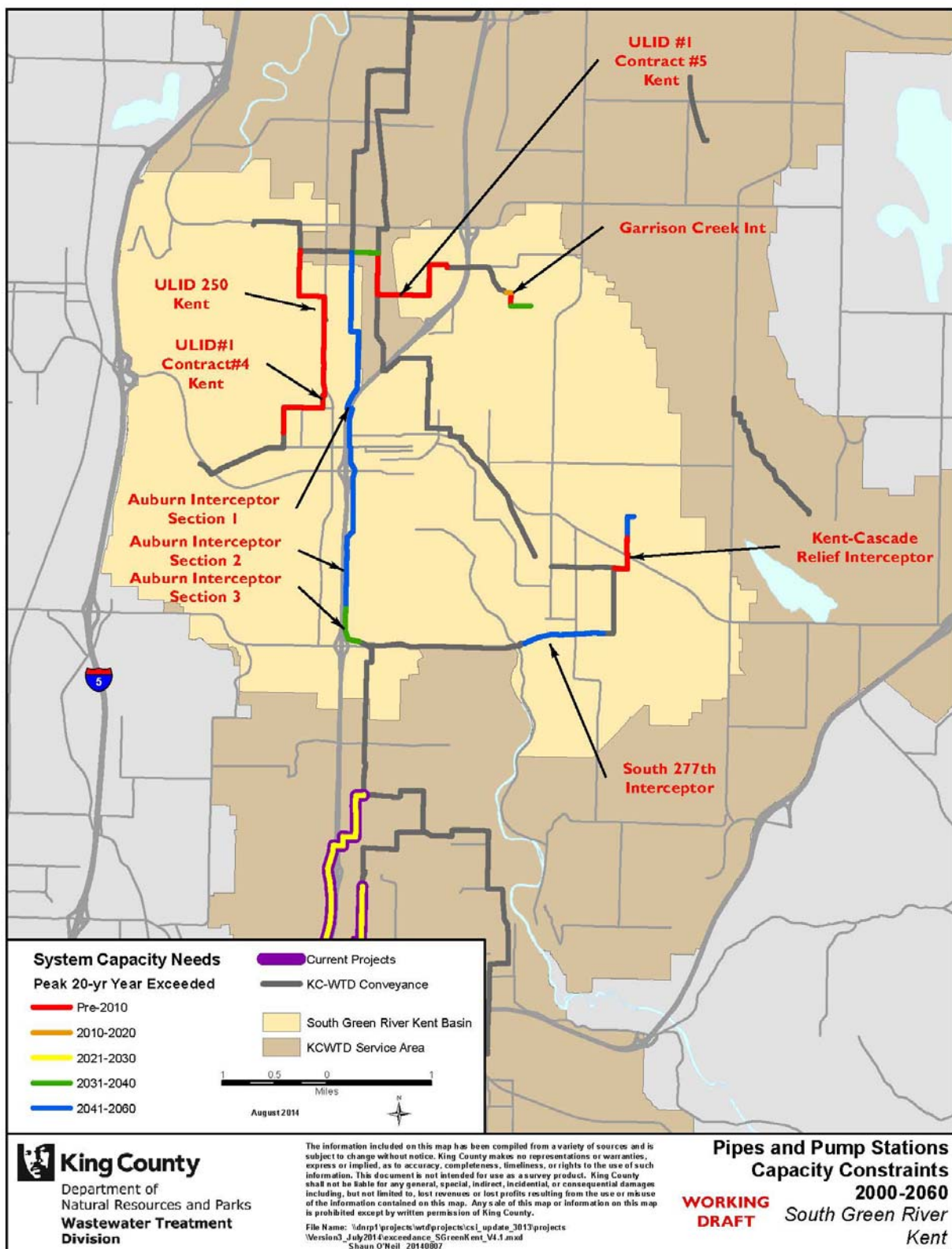
South Lake Sammamish Planning Area



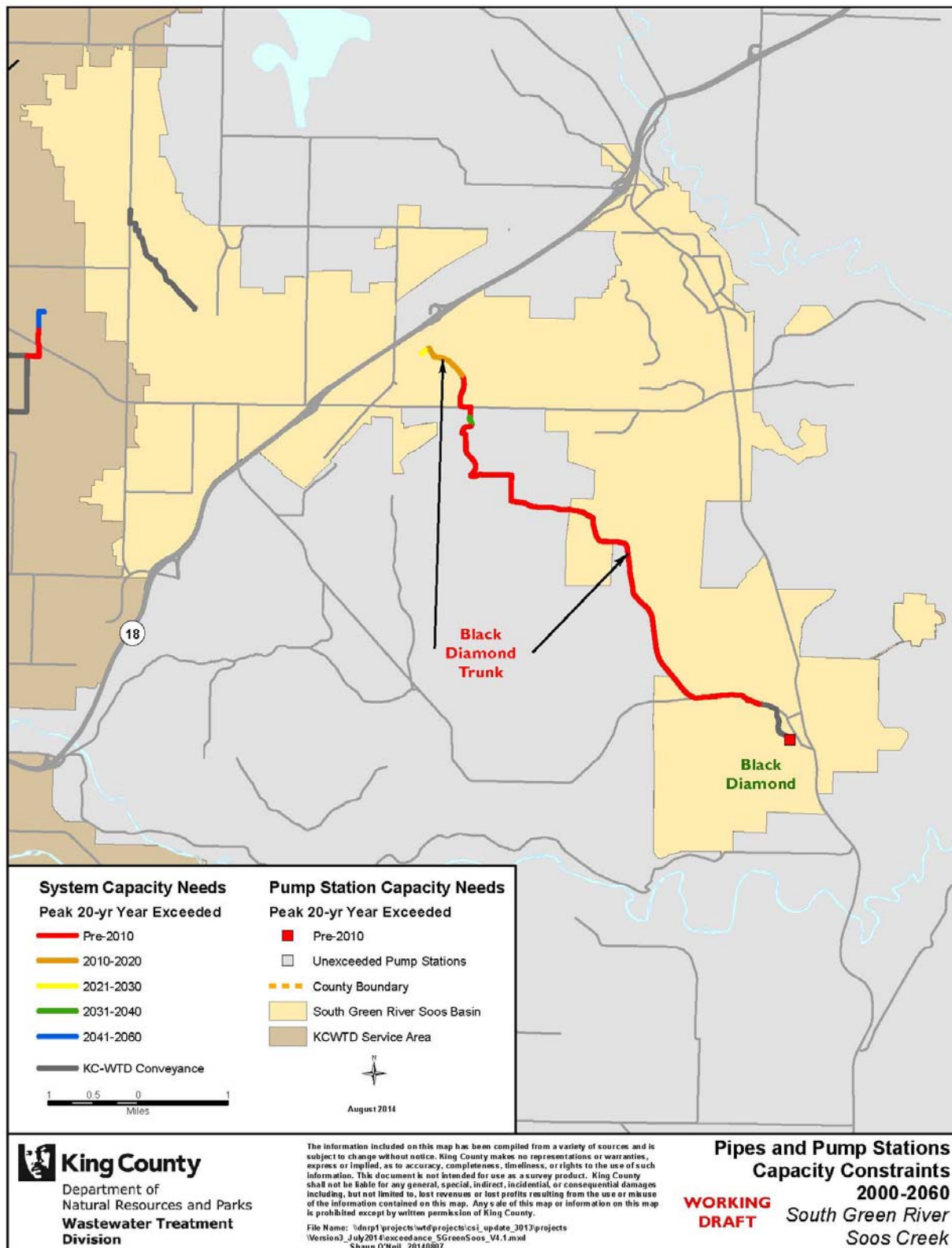
North Green River Planning Area



South Green River/Kent Planning Area



South Green River/Soos Planning Area



South Green River/Auburn Planning Area

